

Datasheet for ABIN2870791

CD40 Protein (CD40) (AA 21-193) (Fc Tag)[Go to Product page](#)**2** Images

Overview

Quantity:	100 µg
Target:	CD40
Protein Characteristics:	AA 21-193
Origin:	Rhesus Monkey
Source:	HEK-293 Cells
Protein Type:	Recombinant
Biological Activity:	Active
Purification tag / Conjugate:	This CD40 protein is labelled with Fc Tag.

Product Details

Sequence:	AA 21-193
Characteristics:	This protein carries a human IgG1 Fc tag at the C-terminus. The protein has a calculated MW of 45.9 kDa. The protein migrates as 56 kDa under reducing (R) condition (SDS-PAGE).
Purity:	>95 % as determined by SDS-PAGE.
Endotoxin Level:	Less than 1.0 EU per µg by the LAL method.

Target Details

Target:	CD40
Alternative Name:	CD40 (CD40 Products)
Background:	CD40 is also known as TNFRSF5, Bp50, CDW40, MGC9013, TNFRSF5 and p50, is a member of

Target Details

the TNF receptor superfamily which are single transmembrane-spanning glycoproteins, and plays an essential role in mediating a broad variety of immune and inflammatory responses including T cell-dependent immunoglobulin class switching, memory B cell development, and germinal center formation. CD40 is a costimulatory protein found on antigen presenting cells and is required for their activation. The binding of CD154 (CD40L) on TH cells to CD40 activates antigen presenting cells and induces a variety of downstream effects. CD40 contains 4 cysteine-rich repeats in the extracellular domain, and is expressed in B cells, dendritic cells, macrophages, endothelial cells, and several tumor cell lines. The extracellular domain has the cysteine-rich repeat regions, which are characteristic for many of the receptors of the TNF superfamily. Interaction of CD40 with its ligand, CD40L, leads to aggregation of CD40 Molecules, which in turn interact with cytoplasmic components to initiate signaling pathways. Early studies on the CD40-CD40L system revealed its role in humoral immunity. Defects in CD40 result in hyper-IgM immunodeficiency type 3 (HIGM3), an autosomal recessive disorder characterized by an inability of B cells to undergo isotype switching, as well as an inability to mount an antibody-specific immune response, and a lack of germinal center formation.

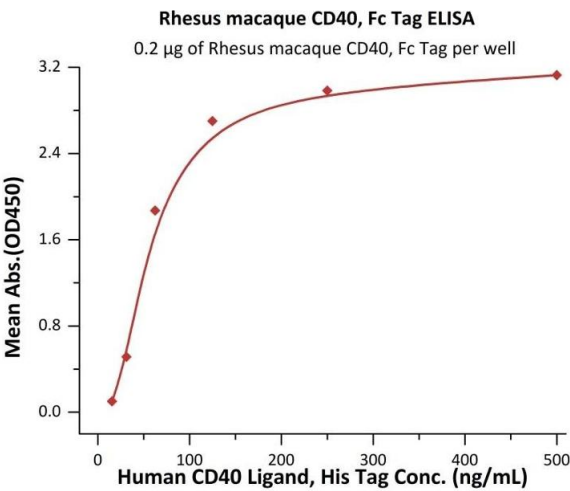
Molecular Weight:	45.9 kDa
NCBI Accession:	NP_001252791
Pathways:	NF-kappaB Signaling , Cellular Response to Molecule of Bacterial Origin , M Phase , Regulation of Leukocyte Mediated Immunity , Positive Regulation of Immune Effector Process , Production of Molecular Mediator of Immune Response , Cancer Immune Checkpoints

Application Details

Restrictions:	For Research Use only
---------------	-----------------------

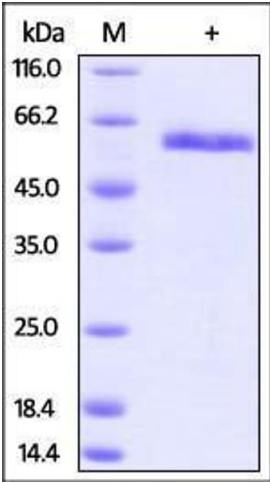
Handling

Format:	Lyophilized
Buffer:	Tris, Glycine and NaCl, pH 7.5
Handling Advice:	Please avoid repeated freeze-thaw cycles.
Storage:	-20 °C



ELISA

Image 1. Immobilized Rhesus macaque CD40, Fc Tag (ABIN2870790,ABIN2870791) at 2 µg/mL (100 µL/well) can bind Human CD40 Ligand, His Tag with a linear range of 16-63 ng/mL (QC tested).



SDS-PAGE

Image 2. Rhesus macaque CD40, Fc Tag on SDS-PAGE under reducing (R) condition. The gel was stained overnight with Coomassie Blue. The purity of the protein is greater than 95%.