



[Go to Product page](#)

Datasheet for ABIN2870806

BTLA Protein (AA 31-150) (Fc Tag)

2 Images

Overview

Quantity:	100 µg
Target:	BTLA
Protein Characteristics:	AA 31-150
Origin:	Human
Source:	HEK-293 Cells
Protein Type:	Recombinant
Biological Activity:	Active
Purification tag / Conjugate:	This BTLA protein is labelled with Fc Tag.

Product Details

Sequence:	AA 31-150
Characteristics:	This protein carries a human IgG1 Fc tag at the C-terminus. The protein has a calculated MW of 40.4 kDa. The protein migrates as 50-60 kDa under reducing (R) condition (SDS-PAGE) due to glycosylation.
Purity:	>92 % as determined by SDS-PAGE.
Endotoxin Level:	Less than 1.0 EU per µg by the LAL method.

Target Details

Target:	BTLA
Alternative Name:	BTLA (BTLA Products)

Target Details

Background: B- and T-lymphocyte attenuator (BTLA) is also known as B- and T-lymphocyte-associated protein, CD antigen CD272. BTLA contains one Ig-like V-type (immunoglobulin-like) domain. As a lymphocyte inhibitory receptor, BTLA / CD272 inhibits lymphocytes during immune response. BTLA / CD272 can interact with tyrosine phosphatases PTPN6/SHP-1 and PTPN11/SHP-2, and interact with TNFRSF14/HVEM.

Molecular Weight: 40.4 kDa

Pathways: [Cancer Immune Checkpoints](#)

Application Details

Restrictions: For Research Use only

Handling

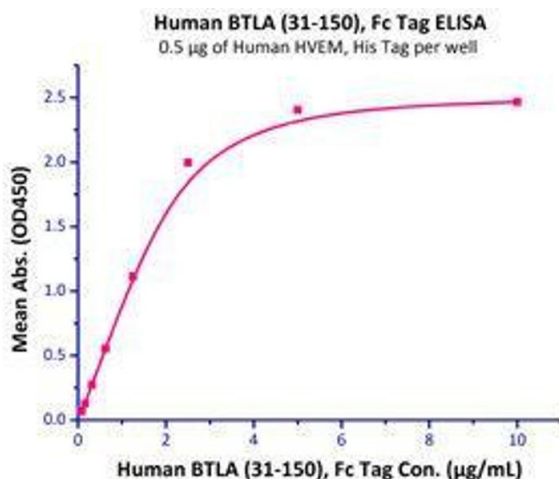
Format: Lyophilized

Buffer: Tris with Glycine, Arginine and NaCl, pH 7.5

Handling Advice: Please avoid repeated freeze-thaw cycles.

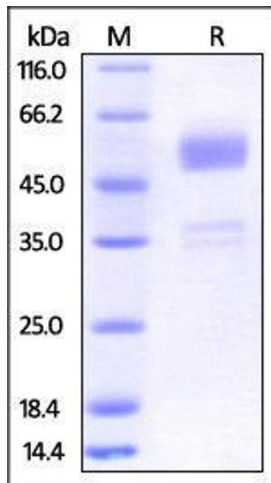
Storage: -20 °C

Images



Binding Studies

Image 1. Immobilized Human HVEM, His Tag (Cat # HVM-H52E9) at 5 µg/mL (100 µL/well) can bind Human BTLA (31-150), Fc Tag (Cat # BTA-H5256) with a linear range of 0.08 – 1.25 µg/mL.



SDS-PAGE

Image 2. Human BTLA (31-150), Fc Tag on SDS-PAGE under reducing (R) condition. The gel was stained overnight with Coomassie Blue. The purity of the protein is greater than 92%.