

Datasheet for ABIN2870815

CD226 Protein (CD226) (AA 19-247) (His tag)[Go to Product page](#)**2** Images

Overview

Quantity:	100 µg
Target:	CD226
Protein Characteristics:	AA 19-247
Origin:	Human
Source:	HEK-293 Cells
Protein Type:	Recombinant
Biological Activity:	Active
Purification tag / Conjugate:	This CD226 protein is labelled with His tag.

Product Details

Sequence:	AA 19-247
Characteristics:	This protein carries a polyhistidine tag at the C-terminus. The protein has a calculated MW of 27.9 kDa. The protein migrates as 40-50 kDa under reducing (R) condition (SDS-PAGE) due to glycosylation.
Purity:	>95 % as determined by SDS-PAGE.
Endotoxin Level:	Less than 1.0 EU per µg by the LAL method.

Target Details

Target:	CD226
Alternative Name:	DNAM-1 (CD226 Products)

Target Details

Background:	DNAX accessory molecule 1 (DNAM-1), a single-pass type I membrane protein, is also known as CD226 antigen and platelet and T cell activation antigen 1 (PTA1), which contains 2 Ig-like C2-type (immunoglobulin-like) domains. DNAM-1 is a ~65 kDa glycoprotein expressed on the surface of natural killer cells, platelets, monocytes and a subset of T cells. DNAM-1 mediates cellular adhesion to other cells bearing its ligands, CD112 and CD155, and cross-linking DNAM-1 with antibodies causes cellular activation. Furthermore, DNAM-1 can interact with PVR and PVRL2.
Molecular Weight:	27.9 kDa
NCBI Accession:	NP_006557
Pathways:	Regulation of Leukocyte Mediated Immunity , Positive Regulation of Immune Effector Process , Cancer Immune Checkpoints

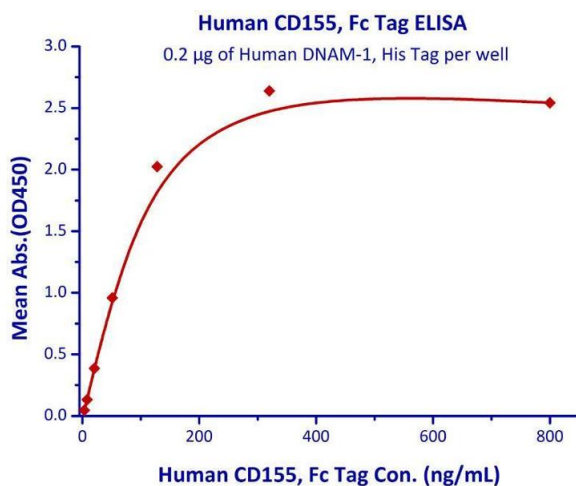
Application Details

Restrictions:	For Research Use only
---------------	-----------------------

Handling

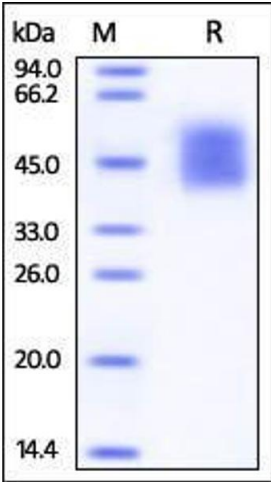
Format:	Lyophilized
Buffer:	PBS, pH 7.4
Handling Advice:	Please avoid repeated freeze-thaw cycles.
Storage:	-20 °C

Images



Binding Studies

Image 1. Immobilized Human DNAM-1, His Tag with a linear range of 3.3-51.2 ng/mL.



SDS-PAGE

Image 2. Human DNAM-1, His Tag on SDS-PAGE under reducing (R) condition. The gel was stained overnight with Coomassie Blue. The purity of the protein is greater than 95%.