

Datasheet for ABIN2871468
anti-Peptide YY antibody (AA 3-19)



[Go to Product page](#)

2 Images

Overview

Quantity:	100 µL
Target:	Peptide YY (PYY)
Binding Specificity:	AA 3-19
Reactivity:	Human
Host:	Rabbit
Clonality:	Polyclonal
Application:	Immunohistochemistry (IHC)

Product Details

Immunogen:	5-10 mg of > 70% pure peptide conjugated to KLH.
Purification:	unpurified serum

Target Details

Target:	Peptide YY (PYY)
Abstract:	PYY Products

Application Details

Application Notes:	Optimal working dilution should be determined by the investigator.
Restrictions:	For Research Use only

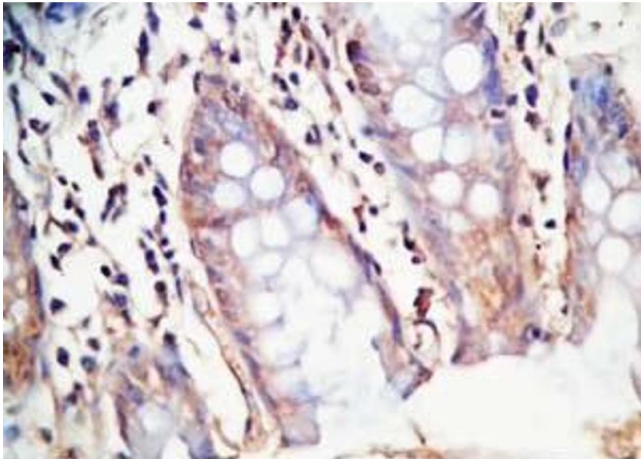
Handling

Format: Liquid

Storage: 4 °C,-20 °C

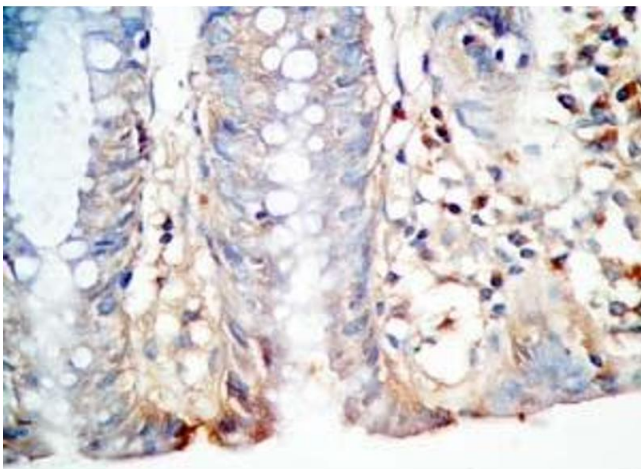
Storage Comment: Store antibodies at 2-4°C before and at -20°C after rehydration. The product is stable for approximately 3-6 weeks after rehydration at -20°C or below.

Images



Immunohistochemistry

Image 1. Human colon tissue was stained by Rabbit AntiPYY (3-19) (Human) Antibody



Immunohistochemistry

Image 2. Human colon tissue was stained by Rabbit AntiPYY (3-19) (Human) Antibody