

Datasheet for ABIN2871511
anti-NMS antibody (Preproprotein)



[Go to Product page](#)

1 Image

Overview

Quantity:	100 µL
Target:	NMS
Binding Specificity:	AA 70-103, Preproprotein
Reactivity:	Mouse
Host:	Rabbit
Clonality:	Polyclonal
Conjugate:	This NMS antibody is un-conjugated
Application:	Immunohistochemistry (IHC)

Product Details

Immunogen:	5-10 mg of > 70% pure peptide conjugated to KLH.
Purification:	unpurified serum

Target Details

Target:	NMS
Abstract:	NMS Products

Application Details

Application Notes:	Optimal working dilution should be determined by the investigator.
Restrictions:	For Research Use only

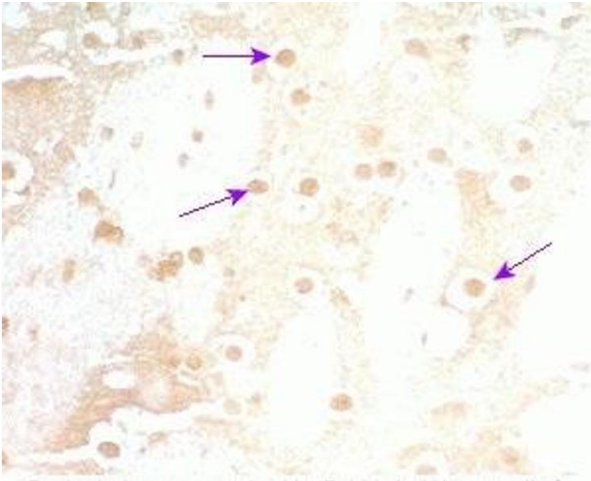
Handling

Format: Liquid

Storage: 4 °C,-20 °C

Storage Comment: Store antibodies at 2-4°C before and at -20°C after rehydration. The product is stable for approximately 3-6 weeks after rehydration at -20°C or below.

Images



Immunohistochemistry

Image 1. Rat brain tissue was stained by Rabbit Anti-Neuromedin S Prepro (70-103) (Mouse) Serum