



[Go to Product page](#)

Datasheet for ABIN2871848

## anti-INSL5 antibody (Preproprotein)

### 3 Images

#### Overview

Quantity:	50 µL
Target:	INSL5
Binding Specificity:	AA 49-106, Preproprotein
Reactivity:	Human
Host:	Rabbit
Clonality:	Polyclonal
Conjugate:	This INSL5 antibody is un-conjugated
Application:	Immunohistochemistry (IHC)

#### Product Details

Immunogen:	5-10 mg of > 70% pure peptide conjugated to KLH.
Purification:	unpurified serum

#### Target Details

Target:	INSL5
Alternative Name:	INSL-5 ( <a href="#">INSL5 Products</a> )
Pathways:	<a href="#">Hormone Activity</a>

#### Application Details

Application Notes:	Optimal working dilution should be determined by the investigator.
--------------------	--

## Application Details

---

Restrictions: For Research Use only

## Handling

---

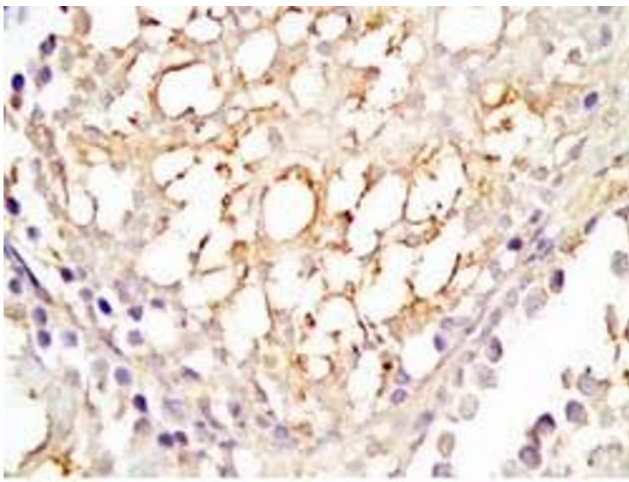
Format: Liquid

Storage: 4 °C, -20 °C

Storage Comment: Store antibodies at 2-4°C before and at -20°C after rehydration. The product is stable for approximately 3-6 weeks after rehydration at -20°C or below.

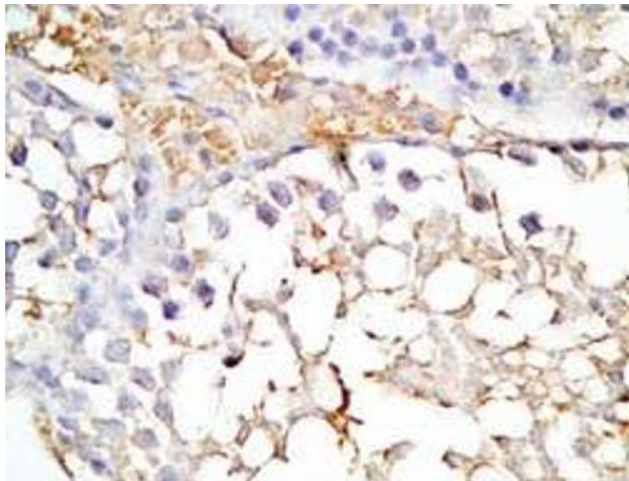
## Images

---



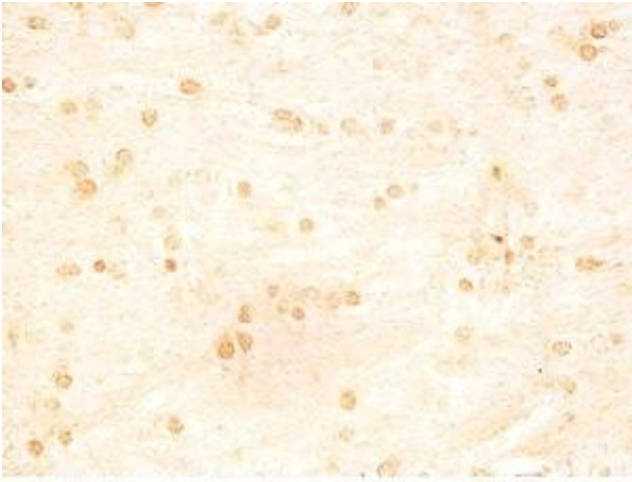
### Immunohistochemistry

**Image 1.** Rat testis tissue was stained by Rabbit Anti-INSL5 C Peptide (Human) Antibody



### Immunohistochemistry

**Image 2.** Mouse testis tissue was stained by Rabbit Anti-INSL5 C Peptide (Human) Antibody



### Immunohistochemistry

**Image 3.** Rat brain tissue was stained by Rabbit Anti-INSL5 C Peptide (49-106) (Human) Serum