

Datasheet for ABIN2871874

**anti-Adrenomedullin 2 antibody (AA 8-47)**[Go to Product page](#)**2** Images

## Overview

Quantity:	50 µL
Target:	Adrenomedullin 2 (ADM2)
Binding Specificity:	AA 8-47
Reactivity:	Human
Host:	Rabbit
Clonality:	Polyclonal
Conjugate:	This Adrenomedullin 2 antibody is un-conjugated
Application:	Immunohistochemistry (IHC)

## Product Details

Immunogen:	5-10 mg of > 70% pure peptide conjugated to KLH.
Purification:	unpurified serum

## Target Details

Target:	Adrenomedullin 2 (ADM2)
Alternative Name:	Intermedin (IMD) / Adrenomedullin-2 (AM-2) ( <a href="#">ADM2 Products</a> )
Pathways:	<a href="#">Hormone Activity</a> , <a href="#">Feeding Behaviour</a>

## Application Details

Application Notes:	Optimal working dilution should be determined by the investigator.
--------------------	--

## Application Details

Restrictions: For Research Use only

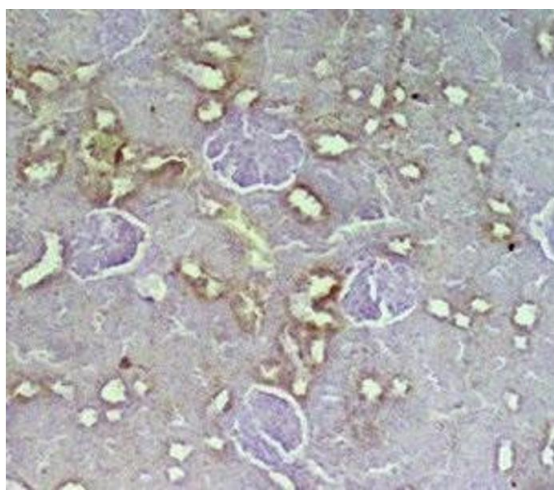
## Handling

Format: Liquid

Storage: 4 °C,-20 °C

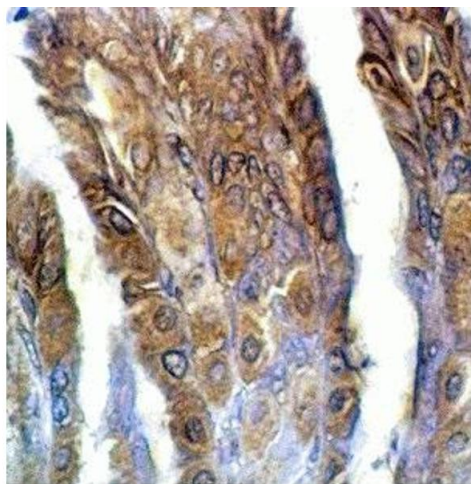
Storage Comment: Store antibodies at 2-4°C before and at -20°C after rehydration. The product is stable for approximately 3-6 weeks after rehydration at -20°C or below.

## Images



### Immunohistochemistry

**Image 1.** Rat kidney tissue was stained by anti-IMD/AM2 (8-470) Serum at 1:200



### Immunohistochemistry

**Image 2.** Rat stomach tissue was stained by anti-IMDS/AM-2(8-47) (Human) Serum at 1:100