



[Go to Product page](#)

Datasheet for ABIN2871898

anti-KISS1 antibody (AA 1-25, AA 68-92)

5 Images

Overview

Quantity:	50 µL
Target:	KISS1
Binding Specificity:	AA 1-25, AA 68-92
Reactivity:	Human
Host:	Rabbit
Clonality:	Polyclonal
Conjugate:	This KISS1 antibody is un-conjugated
Application:	Immunohistochemistry (IHC)

Product Details

Immunogen:	5-10 mg of > 70% pure peptide conjugated to KLH.
Purification:	unpurified serum

Target Details

Target:	KISS1
Alternative Name:	KISS-1 / Metastin (KISS1 Products)
Pathways:	Positive Regulation of Peptide Hormone Secretion

Application Details

Application Notes:	Optimal working dilution should be determined by the investigator.
--------------------	--

Application Details

Restrictions: For Research Use only

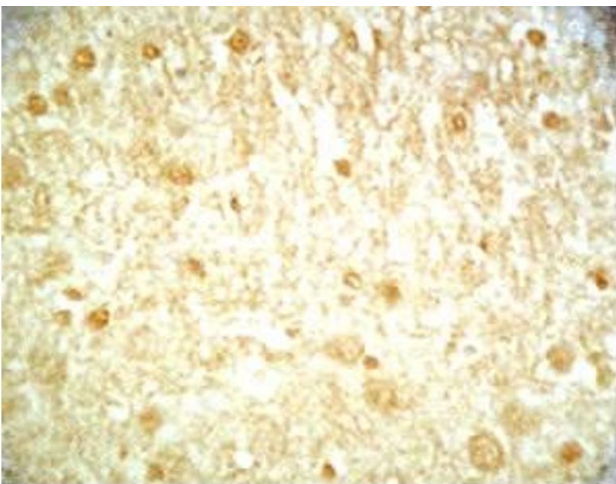
Handling

Format: Liquid

Storage: 4 °C, -20 °C

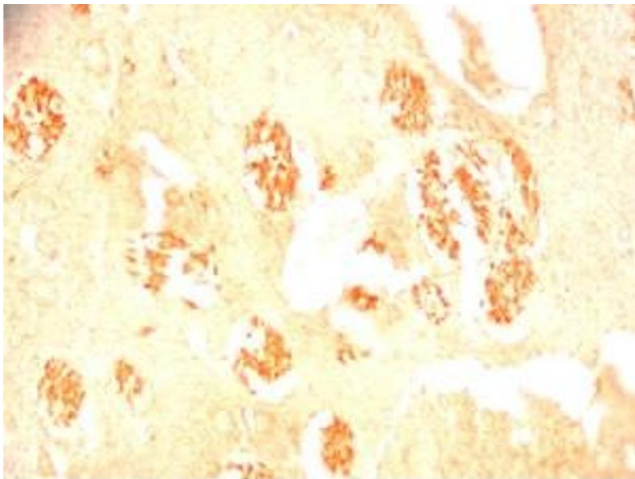
Storage Comment: Store antibodies at 2-4°C before and at -20°C after rehydration. The product is stable for approximately 3-6 weeks after rehydration at -20°C or below.

Images



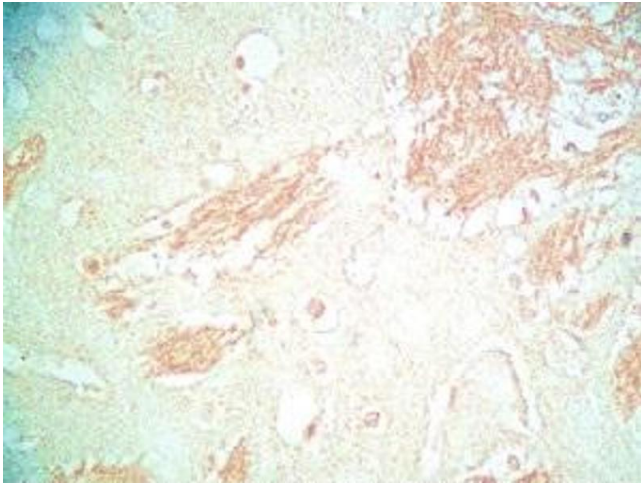
Immunohistochemistry

Image 1. Mouse brain tissue was stained by Rabbit Anti-Metasin (1-25) (Human) / KISS-1 (68-92) (Human) Serum



Immunohistochemistry

Image 2. Rat brain tissue was stained by Rabbit Anti-Metasin (1-25) / KISS-1 (68-92) (Human) Serum



Immunohistochemistry

Image 3. Mouse brain tissue was stained by Rabbit Anti-Metasin (1-25) / KISS-1 (68-92) (Human) Serum

Please check the [product details page](#) for more images. Overall 5 images are available for ABIN2871898.