



[Go to Product page](#)

Datasheet for ABIN2872013

anti-Neuropeptide B-29 (NPB-29) antibody

2 Images

Overview

| | |
|--------------|----------------------------|
| Quantity: | 50 µL |
| Target: | Neuropeptide B-29 (NPB-29) |
| Reactivity: | Rat |
| Host: | Rabbit |
| Clonality: | Polyclonal |
| Conjugate: | Un-conjugated |
| Application: | Immunohistochemistry (IHC) |

Product Details

| | |
|---------------|--|
| Immunogen: | 5-10 mg of > 70% pure peptide conjugated to KLH. |
| Purification: | unpurified serum |

Target Details

| | |
|-----------|---------------------------------|
| Target: | Neuropeptide B-29 (NPB-29) |
| Abstract: | NPB-29 Products |

Application Details

| | |
|--------------------|--|
| Application Notes: | Optimal working dilution should be determined by the investigator. |
| Restrictions: | For Research Use only |

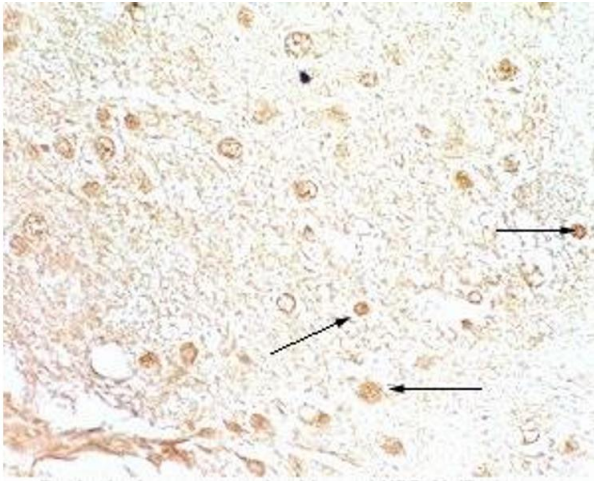
Handling

Format: Liquid

Storage: 4 °C,-20 °C

Storage Comment: Store antibodies at 2-4°C before and at -20°C after rehydration. The product is stable for approximately 3-6 weeks after rehydration at -20°C or below.

Images



Immunohistochemistry

Image 1. Rat brain tissue stained by Rabbit Anti-NPB-29 (Rat) at 1:200-500



Immunohistochemistry

Image 2. Rat hypothalamus tissue was stained by anti-NPB-29 (Rat) serum at 1:200-500