



[Go to Product page](#)

Datasheet for ABIN2872088
anti-QRFPR antibody (AA 401-433)

3 Images

Overview

Quantity:	100 µL
Target:	QRFPR
Binding Specificity:	AA 401-433
Reactivity:	Mouse
Host:	Rabbit
Clonality:	Polyclonal
Conjugate:	This QRFPR antibody is un-conjugated
Application:	Immunohistochemistry (IHC)

Product Details

Immunogen:	5-10 mg of > 70% pure peptide conjugated to KLH.
Purification:	unpurified serum

Target Details

Target:	QRFPR
Alternative Name:	QPRF Receptor AQ 27 / SP9155 (QRFPR Products)

Application Details

Application Notes:	Optimal working dilution should be determined by the investigator.
Restrictions:	For Research Use only

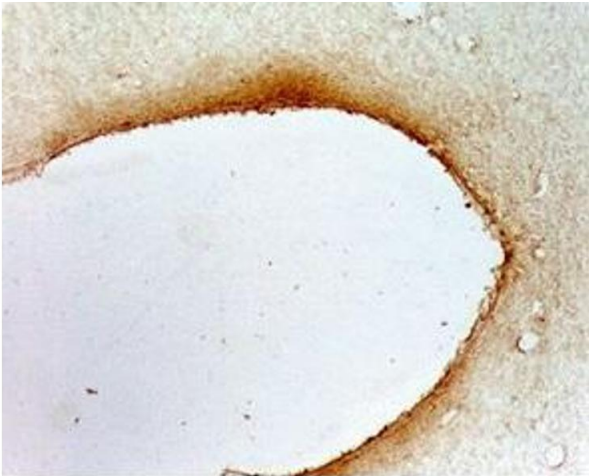
Handling

Format: Liquid

Storage: 4 °C,-20 °C

Storage Comment: Store antibodies at 2-4°C before and at -20°C after rehydration. The product is stable for approximately 3-6 weeks after rehydration at -20°C or below.

Images



Immunohistochemistry

Image 1. Rat hypothalamus tissue was stained by anti-AQ27 (401-433) (Mouse) Serum at 1:50

Western blot analysis of QRFP Receptor AQ27 in the rat brain tissue by Anti-AQ27 (401-433) (Mouse) Antibody



- Rat brain tissue homogenate on 7.5% SDS-PAGE gel
- Anti-QRFP Receptor AQ27 (401-433) (Mouse) Antiserum at 1: 500

Western Blotting

Image 2. Western Blot Analysis of QRFP Receptor AQ27 in the rat brain tissue by Anti-AQ27 (401-433)(Mouse) Antibody. Rat brain tissue homogenate on 7.5% SDS-PAGE gel. Anti-QRFP Receptor AQ27 (401-433) (Mouse) Antiserum at 1:500



Immunohistochemistry

Image 3. Rat hypothalamus tissue was stained by anti-AQ-27 (401-433) (Mouse) Serum at 1:100