

Datasheet for ABIN2872208
anti-FGF21 antibody (AA 26-47)[Go to Product page](#)

4 Images

Overview

Quantity:	100 µL
Target:	FGF21
Binding Specificity:	AA 26-47
Reactivity:	Human
Host:	Rabbit
Clonality:	Polyclonal
Conjugate:	This FGF21 antibody is un-conjugated
Application:	Immunohistochemistry (IHC)

Product Details

Immunogen:	5-10 mg of > 70% pure peptide conjugated to KLH.
Purification:	unpurified serum

Target Details

Target:	FGF21
Alternative Name:	FGF-21 (FGF21 Products)
Pathways:	RTK Signaling

Application Details

Application Notes:	Optimal working dilution should be determined by the investigator.
--------------------	--

Application Details

Restrictions: For Research Use only

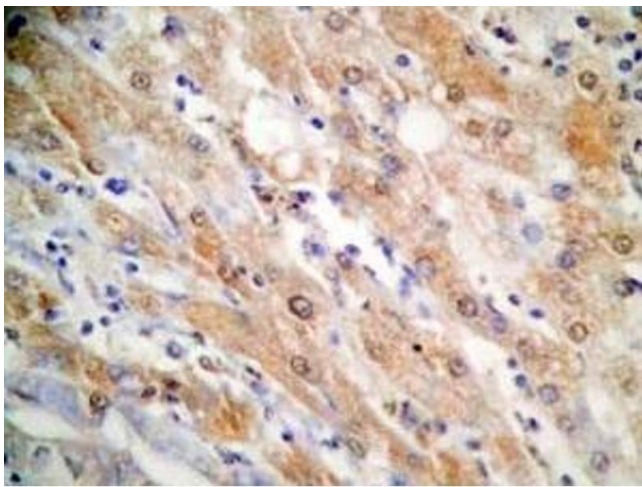
Handling

Format: Liquid

Storage: 4 °C, -20 °C

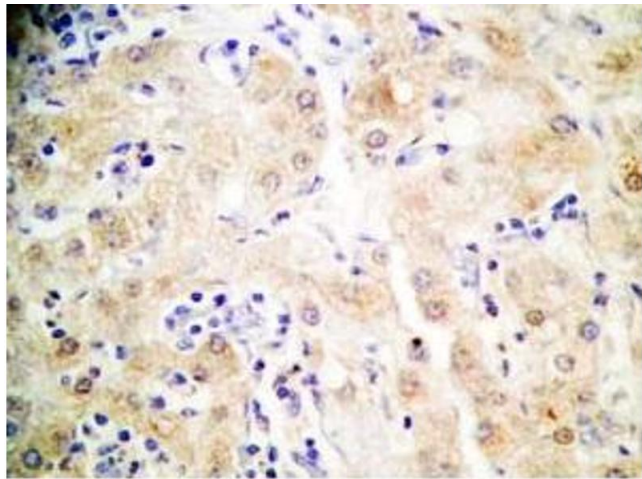
Storage Comment: Store antibodies at 2-4°C before and at -20°C after rehydration. The product is stable for approximately 3-6 weeks after rehydration at -20°C or below.

Images



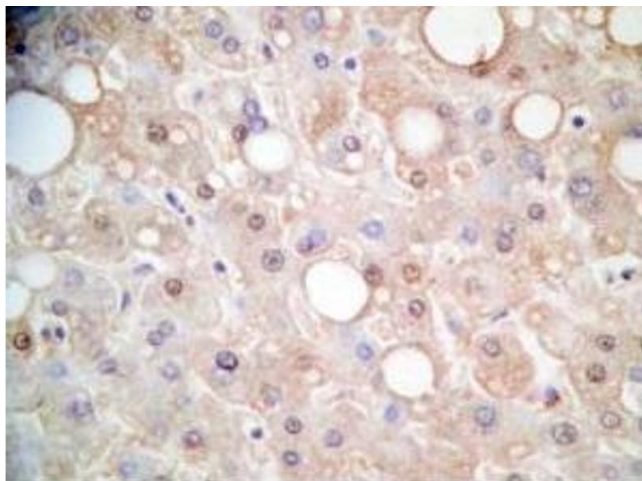
Immunohistochemistry

Image 1. Human hepatocellular carcinoma tissue was stained by Rabbit Anti-FGF-21 (26-47) (H) Antibody



Immunohistochemistry

Image 2. Human hepatocellular carcinoma tissue was stained by Rabbit Anti-FGF-21 (26-47) (H)



Immunohistochemistry

Image 3. Human liver tissue was stained by Rabbit Anti-FGF-21 (26-47) (H) Antibody

Please check the [product details page](#) for more images. Overall 4 images are available for ABIN2872208.