

Datasheet for ABIN2872247

**anti-GLP-1 antibody (amidated)**

## 4 Images

[Go to Product page](#)

## Overview

Quantity:	50 µL
Target:	GLP-1
Binding Specificity:	AA 7-36, amidated
Reactivity:	Human, Rat, Mouse
Host:	Rabbit
Clonality:	Polyclonal
Conjugate:	This GLP-1 antibody is un-conjugated
Application:	Immunohistochemistry (IHC)

## Product Details

Immunogen:	5-10 mg of > 70% pure peptide conjugated to KLH.
Purification:	unpurified serum

## Target Details

Target:	GLP-1
Alternative Name:	Glucagon-Like Peptide-1 (GLP-1) ( <a href="#">GLP-1 Products</a> )

## Application Details

Application Notes:	Optimal working dilution should be determined by the investigator.
Restrictions:	For Research Use only

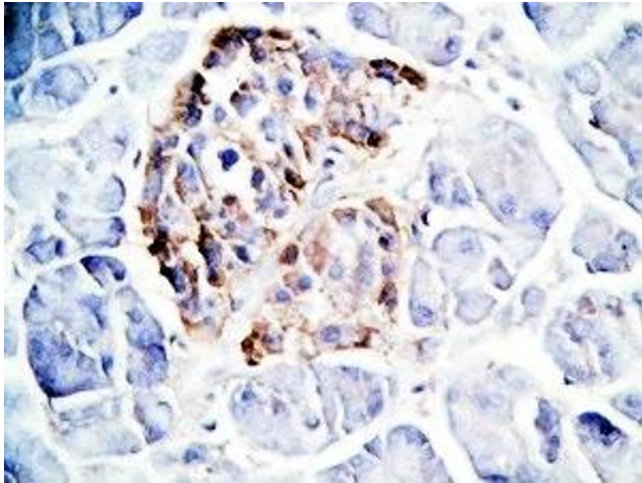
## Handling

Format: Liquid

Storage: 4 °C,-20 °C

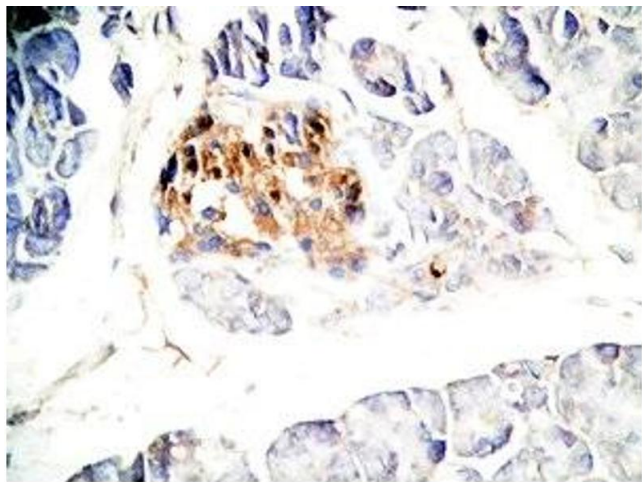
Storage Comment: Store antibodies at 2-4°C before and at -20°C after rehydration. The product is stable for approximately 3-6 weeks after rehydration at -20°C or below.

## Images



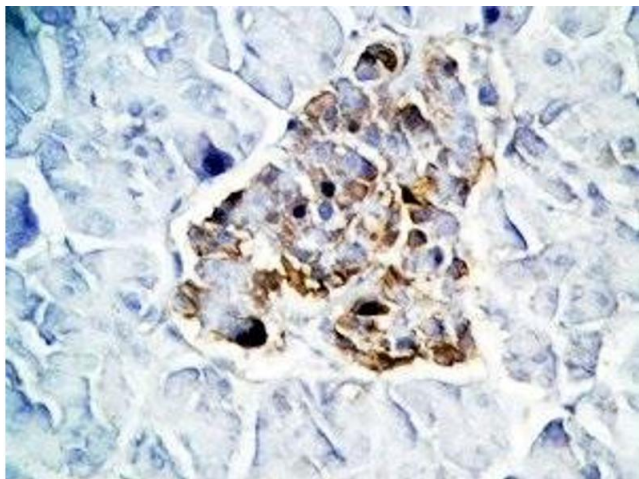
### Immunohistochemistry

**Image 1.** Human pancreas cancer tissue was stained by Rabbit Anti-GLP-1(7-36) -NH2 Antibody



### Immunohistochemistry

**Image 2.** Human pancreas cancer tissue was stained by Rabbit Anti-GLP-1(7-36) -NH2 Antibody



#### Immunohistochemistry

**Image 3.** Human pancreas cancer tissue was stained by Rabbit Anti-GLP-1(7-36)-NH2 Antibody

Please check the [product details page](#) for more images. Overall 4 images are available for ABIN2872247.