

Datasheet for ABIN2872310
anti-Motilin antibody (Preproprotein)[Go to Product page](#)

2 Images

Overview

Quantity:	100 µL
Target:	Motilin (MLN)
Binding Specificity:	AA 50-70, Preproprotein
Reactivity:	Human
Host:	Rabbit
Clonality:	Polyclonal
Application:	Immunohistochemistry (IHC)

Product Details

Immunogen:	5-10 mg of > 70% pure peptide conjugated to KLH.
Purification:	unpurified serum

Target Details

Target:	Motilin (MLN)
Alternative Name:	Motilin (MLN Products)
Pathways:	Hormone Activity

Application Details

Application Notes:	Optimal working dilution should be determined by the investigator.
Restrictions:	For Research Use only

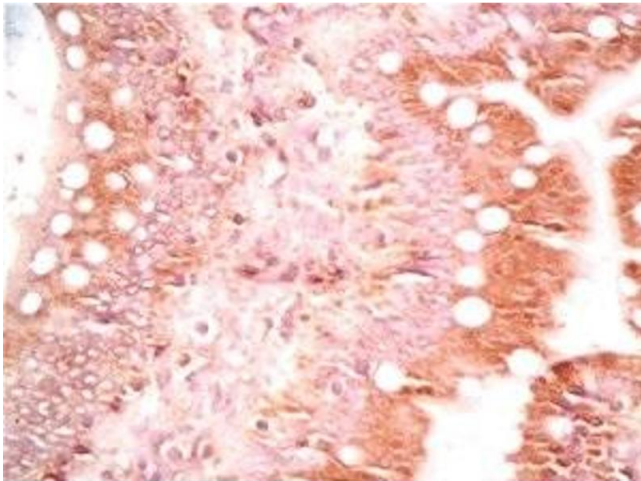
Handling

Format: Liquid

Storage: 4 °C,-20 °C

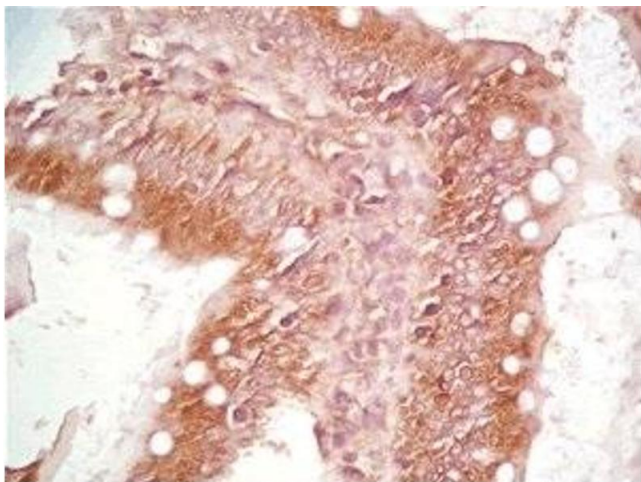
Storage Comment: Store antibodies at 2-4°C before and at -20°C after rehydration. The product is stable for approximately 3-6 weeks after rehydration at -20°C or below.

Images



Immunohistochemistry

Image 1. Rat intestin tissue was stained by Rabbit Anti-Motilin Prepro (50-70) (Human) Serum



Immunohistochemistry

Image 2. Rat intestin tissue was stained by Rabbit Anti-Motilin Prepro (50-70) (Human) Serum