

Datasheet for ABIN2872524  
**anti-ENPP2 antibody (AA 369-391)**[Go to Product page](#)

## 3 Images

## Overview

Quantity:	100 µL
Target:	ENPP2
Binding Specificity:	AA 369-391
Reactivity:	Human, Mouse
Host:	Rabbit
Clonality:	Polyclonal
Conjugate:	This ENPP2 antibody is un-conjugated
Application:	Immunohistochemistry (IHC)

## Product Details

Immunogen:	5-10 mg of > 70% pure peptide conjugated to KLH.
Purification:	unpurified serum

## Target Details

Target:	ENPP2
Alternative Name:	Autotaxin (ATX) ( <a href="#">ENPP2 Products</a> )

## Application Details

Application Notes:	Optimal working dilution should be determined by the investigator.
Restrictions:	For Research Use only

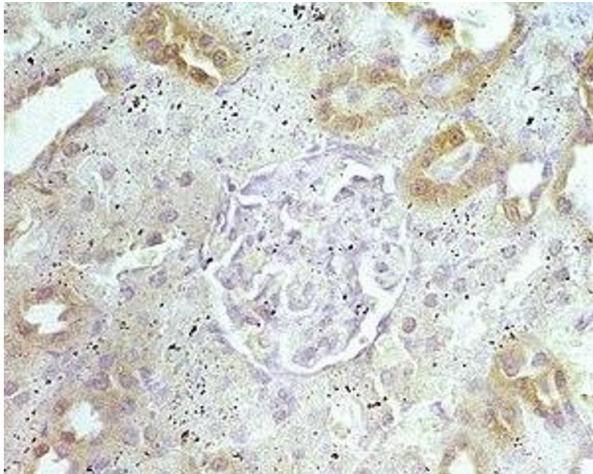
## Handling

Format: Liquid

Storage: 4 °C,-20 °C

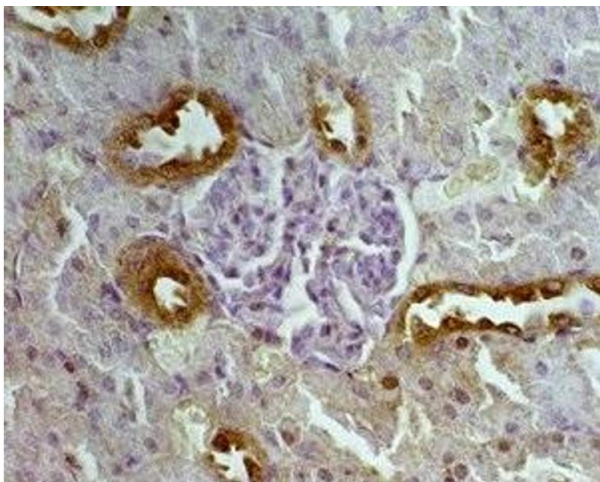
Storage Comment: Store antibodies at 2-4°C before and at -20°C after rehydration. The product is stable for approximately 3-6 weeks after rehydration at -20°C or below.

## Images



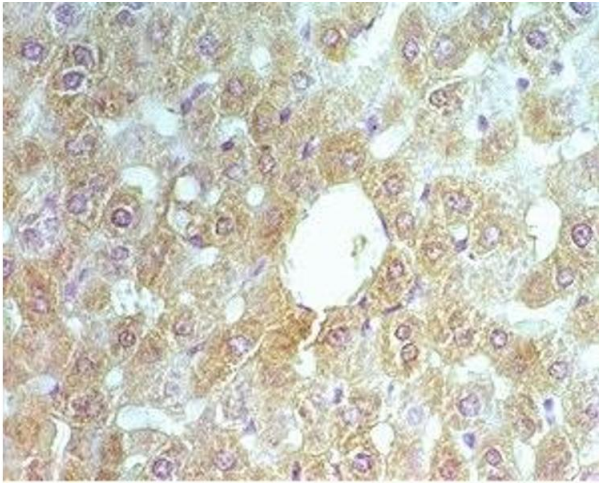
### Immunohistochemistry

**Image 1.** Mouse kidney tissue was stained by Anti-Autoxin (369-391) (Human, Mouse) Serum



### Immunohistochemistry

**Image 2.** Rat kidney tissue was stained by Anti-Autoxin (369-391) (Human, Mouse) Serum



#### Immunohistochemistry

**Image 3.** Rat liver tissue was stained by rabbit Anti-ABCB6 (260-301) (Human, Mouse ) Serum