

Datasheet for ABIN2872669
anti-ANGPTL6 antibody (AA 215-230)[Go to Product page](#)

2 Images

Overview

Quantity:	100 µL
Target:	ANGPTL6
Binding Specificity:	AA 215-230
Reactivity:	Mouse
Host:	Rabbit
Clonality:	Polyclonal
Conjugate:	This ANGPTL6 antibody is un-conjugated
Application:	Immunohistochemistry (IHC)

Product Details

Immunogen:	5-10 mg of > 70% pure peptide conjugated to KLH.
Purification:	unpurified serum

Target Details

Target:	ANGPTL6
Alternative Name:	AGF / Angiopoietin-Like 6 (ANGPTL6 Products)
Pathways:	Regulation of Actin Filament Polymerization

Application Details

Application Notes:	Optimal working dilution should be determined by the investigator.
--------------------	--

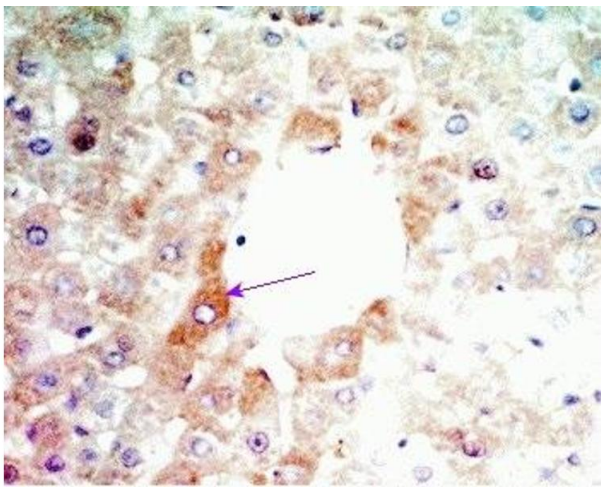
Application Details

Restrictions: For Research Use only

Handling

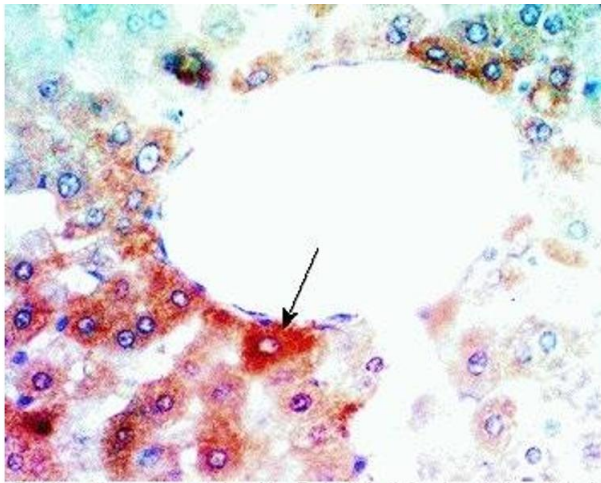
Format:	Liquid
Storage:	4 °C,-20 °C
Storage Comment:	Store antibodies at 2-4°C before and at -20°C after rehydration. The product is stable for approximately 3-6 weeks after rehydration at -20°C or below.

Images



Immunohistochemistry

Image 1. Rat liver tissue was stained by Anti-Angiopoietin-related Growth-Factor (AGF) /ANGIOPOIETIN - LIKE 6 (ANGPTL6) (215-350) (Mouse)



Immunohistochemistry

Image 2. Rat liver tissue was stained by Anti-Angiopoietin-related Growth-Factor (AGF) /ANGIOPOIETIN - LIKE 6 (ANGPTL6) (215-350) (Mouse)