

Datasheet for ABIN2872933
anti-SFRP2 antibody (AA 25-50)[Go to Product page](#)

4 Images

Overview

Quantity:	100 µL
Target:	SFRP2
Binding Specificity:	AA 25-50
Reactivity:	Human
Host:	Rabbit
Clonality:	Polyclonal
Application:	Immunohistochemistry (IHC)

Product Details

Immunogen:	5-10 mg of > 70% pure peptide conjugated to KLH.
Purification:	unpurified serum

Target Details

Target:	SFRP2
Alternative Name:	Secreted Frizzled-Related Protein 2 (SFRP 2) (SFRP2 Products)
Pathways:	WNT Signaling , Tube Formation , Positive Regulation of Endopeptidase Activity , Negative Regulation of intrinsic apoptotic Signaling , Positive Regulation of fat Cell Differentiation

Application Details

Application Notes:	Optimal working dilution should be determined by the investigator.
--------------------	--------------------------------------------------------------------

Application Details

Restrictions: For Research Use only

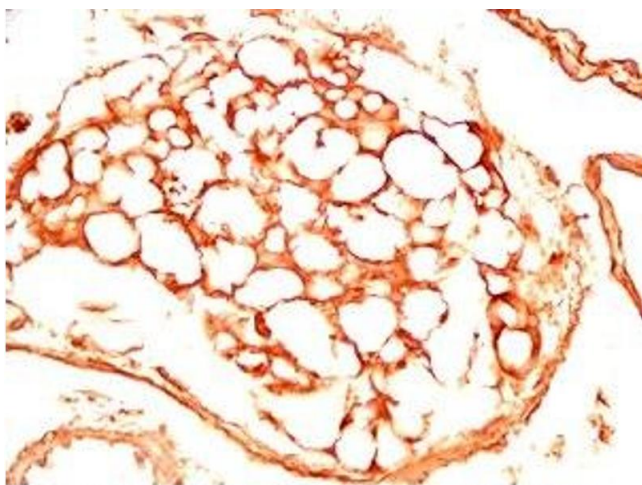
Handling

Format: Liquid

Storage: 4 °C, -20 °C

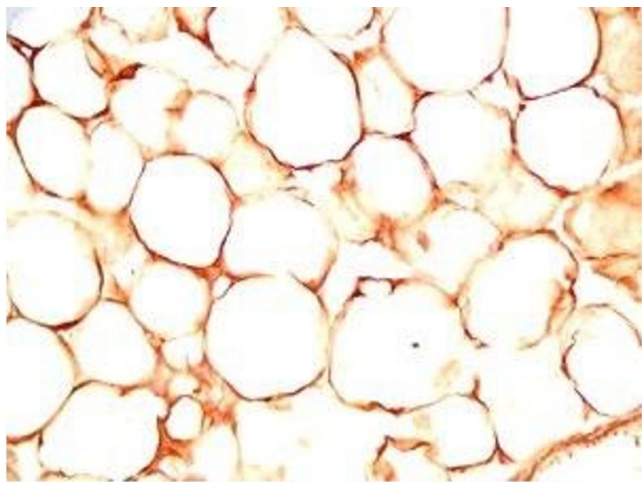
Storage Comment: Store antibodies at 2-4°C before and at -20°C after rehydration. The product is stable for approximately 3-6 weeks after rehydration at -20°C or below.

Images



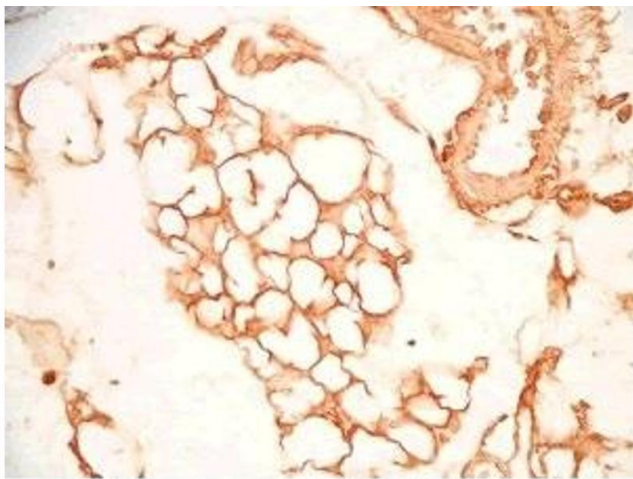
Immunohistochemistry

Image 1. Mouse visceral fat tissue was stained by Rabbit Anti-sFRP-2 (25-50) (Human) Antiserum



Immunohistochemistry

Image 2. Rat visceral fat tissue was stained by Rabbit Anti-sFRP-2 (25-50) (Human) Antiserum



Immunohistochemistry

Image 3. Mouse visceral fat tissue was stained by Rabbit Anti-SFRP-2 S (25-50) (Human) Antiserum

Please check the [product details page](#) for more images. Overall 4 images are available for ABIN2872933.