

Datasheet for ABIN2873016
anti-RXFP1 antibody (AA 735-757)



[Go to Product page](#)

1 Image

Overview

Quantity:	50 µL
Target:	RXFP1
Binding Specificity:	AA 735-757
Reactivity:	Human
Host:	Rabbit
Clonality:	Polyclonal
Conjugate:	This RXFP1 antibody is un-conjugated
Application:	Immunohistochemistry (IHC)

Product Details

Immunogen:	5-10 mg of > 70% pure peptide conjugated to KLH.
Purification:	unpurified serum

Target Details

Target:	RXFP1
Alternative Name:	LGR7 / Relaxin Receptor 1 (RXFP1 Products)
Pathways:	Myometrial Relaxation and Contraction

Application Details

Application Notes:	Optimal working dilution should be determined by the investigator.
--------------------	--

Application Details

Restrictions: For Research Use only

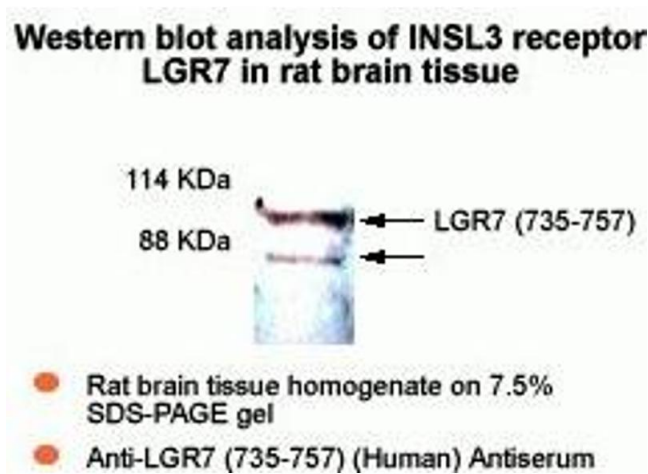
Handling

Format: Liquid

Storage: 4 °C,-20 °C

Storage Comment: Store antibodies at 2-4°C before and at -20°C after rehydration. The product is stable for approximately 3-6 weeks after rehydration at -20°C or below.

Images



Western Blotting

Image 1. Western Blot Analysis of INSL3 receptotr LGR7 in rat heart tissue. Rat brain tissue homogenate on 7,5% SDS-PAGE gel. Anti-LGR7 (735-757) (Human) Antiserum