

Datasheet for ABIN2873065
anti-INSL6 antibody (Preproprotein)

4 Images

[Go to Product page](#)

Overview

Quantity:	100 µL
Target:	INSL6
Binding Specificity:	AA 55-118, Preproprotein
Reactivity:	Human
Host:	Rabbit
Clonality:	Polyclonal
Application:	Immunohistochemistry (IHC)

Product Details

Immunogen:	5-10 mg of > 70% pure peptide conjugated to KLH.
Purification:	unpurified serum

Target Details

Target:	INSL6
Alternative Name:	INSL 6 (INSL6 Products)
Pathways:	Hormone Activity

Application Details

Application Notes:	Optimal working dilution should be determined by the investigator.
Restrictions:	For Research Use only

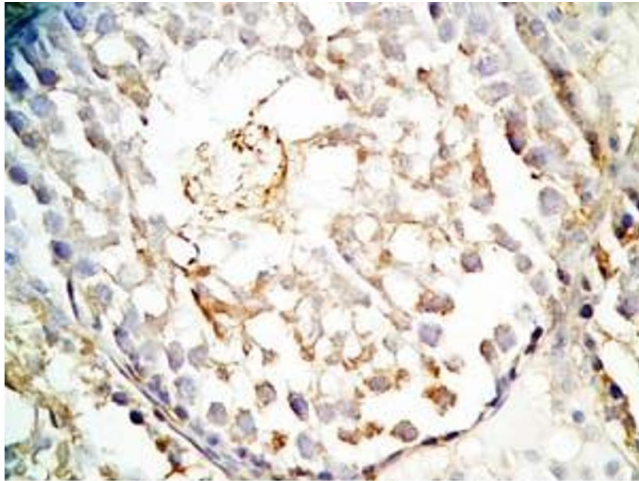
Handling

Format: Liquid

Storage: 4 °C,-20 °C

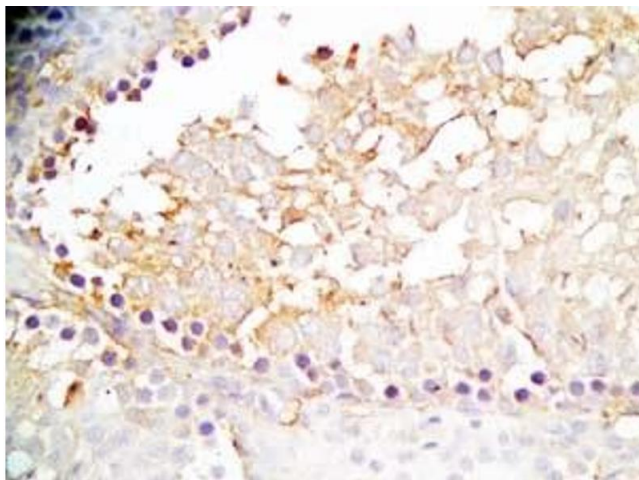
Storage Comment: Store antibodies at 2-4°C before and at -20°C after rehydration. The product is stable for approximately 3-6 weeks after rehydration at -20°C or below.

Images



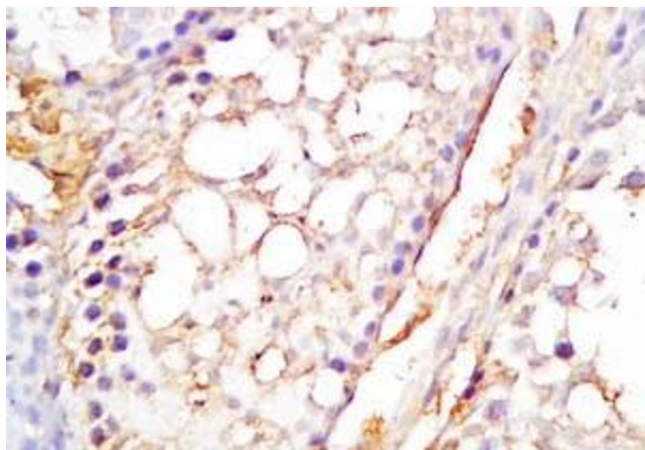
Immunohistochemistry

Image 1. Rat testis tissue was stained by Rabbit Anti-INSL6 C Peptide (Human) Antibody



Immunohistochemistry

Image 2. Rat testis tissue was stained by Rabbit Anti-INSL6 C Peptide (Human) Antibody



Immunohistochemistry

Image 3. Mouse testis tissue was stained by Rabbit Anti-INSL6 C Peptide (Human) Antibody

Please check the [product details page](#) for more images. Overall 4 images are available for ABIN2873065.