

Datasheet for ABIN2873103  
**anti-Spexin antibody (Preproprotein)**[Go to Product page](#)

## 4 Images

## Overview

Quantity:	100 µL
Target:	Spexin (SPX)
Binding Specificity:	AA 36-58, Preproprotein
Reactivity:	Human
Host:	Rabbit
Clonality:	Polyclonal
Application:	Immunohistochemistry (IHC)

## Product Details

Immunogen:	5-10 mg of > 70% pure peptide conjugated to KLH.
Purification:	unpurified serum

## Target Details

Target:	Spexin (SPX)
Alternative Name:	Spexin ( <a href="#">SPX Products</a> )

## Application Details

Application Notes:	Optimal working dilution should be determined by the investigator.
Restrictions:	For Research Use only

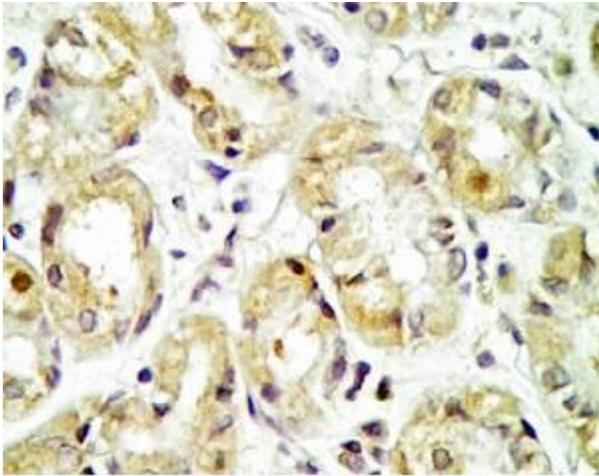
## Handling

Format: Liquid

Storage: 4 °C, -20 °C

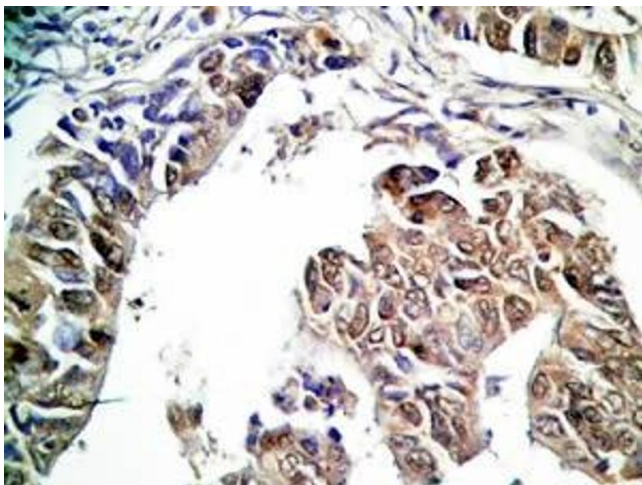
Storage Comment: Store antibodies at 2-4°C before and at -20°C after rehydration. The product is stable for approximately 3-6 weeks after rehydration at -20°C or below.

## Images



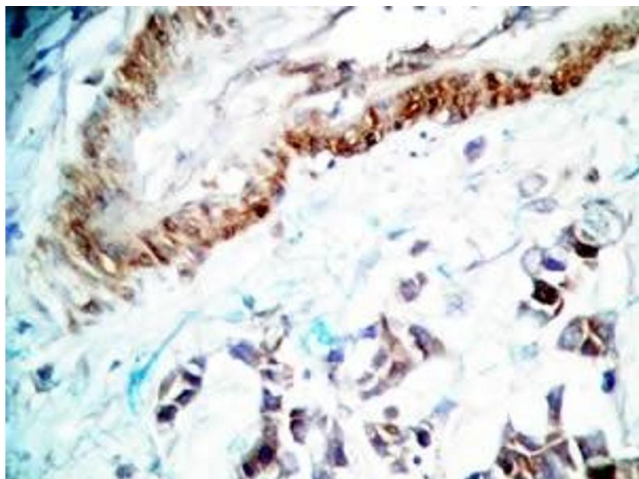
### Immunohistochemistry

**Image 1.** Human stomach cancer tissue was stained by rabbit Anti-Spexin prepro (36-58) Antibody



### Immunohistochemistry

**Image 2.** Human stomach cancer tissue was stained by rabbit Anti-Spexin prepro (36-58) (H) Antibody



#### Immunohistochemistry

**Image 3.** Human stomach cancer tissue was stained by rabbit Anti-Spexin prepro (36-58) (H) Antiserum

Please check the [product details page](#) for more images. Overall 4 images are available for ABIN2873103.