

Datasheet for ABIN2873110

anti-Spexin antibody

6 Images



[Go to Product page](#)

Overview

Quantity:	100 µL
Target:	Spexin (SPX)
Reactivity:	Human, Cow, Mouse
Host:	Rabbit
Clonality:	Polyclonal
Conjugate:	This Spexin antibody is un-conjugated
Application:	Immunohistochemistry (IHC)

Product Details

Immunogen:	5-10 mg of > 70% pure peptide conjugated to KLH.
Purification:	unpurified serum

Target Details

Target:	Spexin (SPX)
Alternative Name:	Spexin / NPQ (SPX Products)

Application Details

Application Notes:	Optimal working dilution should be determined by the investigator.
Restrictions:	For Research Use only

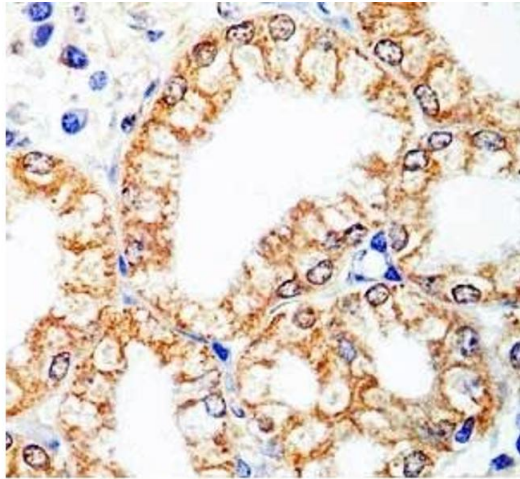
Handling

Format: Liquid

Storage: 4 °C,-20 °C

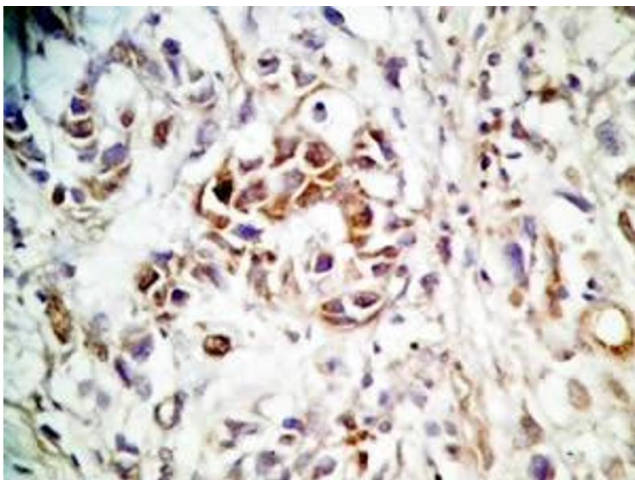
Storage Comment: Store antibodies at 2-4°C before and at -20°C after rehydration. The product is stable for approximately 3-6 weeks after rehydration at -20°C or below.

Images



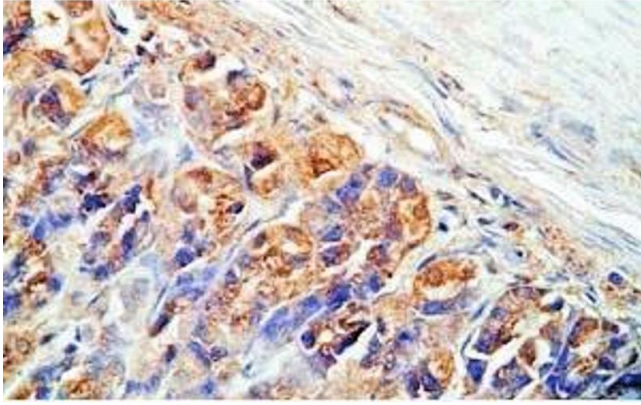
Immunohistochemistry

Image 1. Human stomach tissue was stained by Rabbit Anti-Spexin (H) antibody



Immunohistochemistry

Image 2. Human stomach cancer tissue was stained by rabbit anti-Spexin(H) Antiserum



Immunohistochemistry

Image 3. Rat stomach tissue was stained by Rabbit Anti-Spexin (H) Antibody

Please check the [product details page](#) for more images. Overall 6 images are available for ABIN2873110.