

Datasheet for ABIN2873204

## anti-Gastrin-Releasing Peptide antibody



[Go to Product page](#)

### 3 Images

#### Overview

Quantity:	50 µL
Target:	Gastrin-Releasing Peptide (GRP)
Reactivity:	Pig
Host:	Rabbit
Clonality:	Polyclonal
Conjugate:	This Gastrin-Releasing Peptide antibody is un-conjugated
Application:	Immunohistochemistry (IHC)

#### Product Details

Immunogen:	5-10 mg of > 70% pure peptide conjugated to KLH.
Purification:	unpurified serum

#### Target Details

Target:	Gastrin-Releasing Peptide (GRP)
Alternative Name:	Gastrin Releasing Peptide (GRP) ( <a href="#">GRP Products</a> )
Pathways:	<a href="#">Peptide Hormone Metabolism</a> , <a href="#">Hormone Activity</a>

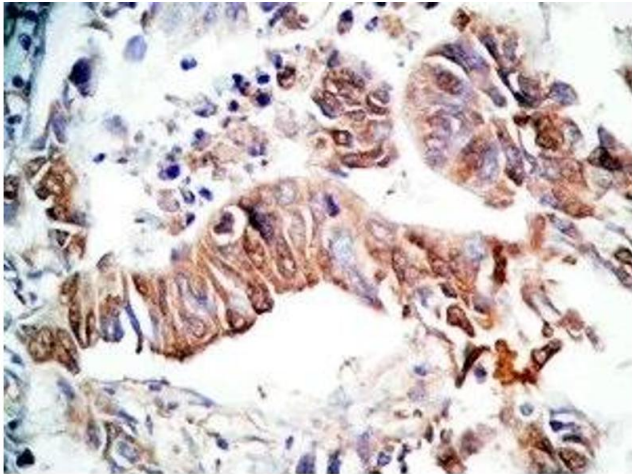
#### Application Details

Application Notes:	Optimal working dilution should be determined by the investigator.
Restrictions:	For Research Use only

Handling

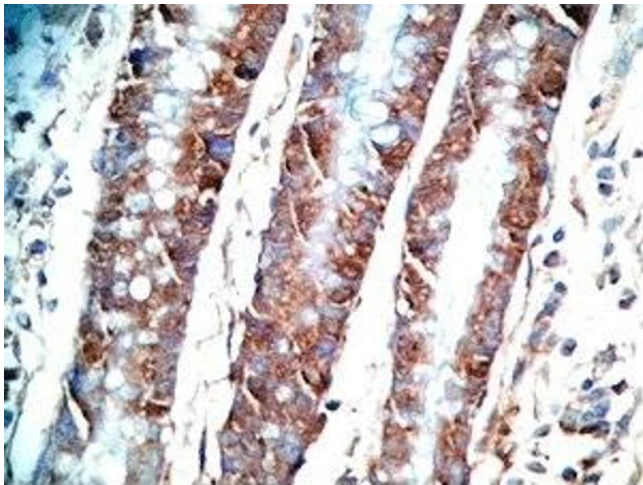
Format:	Liquid
Storage:	4 °C,-20 °C
Storage Comment:	Store antibodies at 2-4°C before and at -20°C after rehydration. The product is stable for approximately 3-6 weeks after rehydration at -20°C or below.

Images



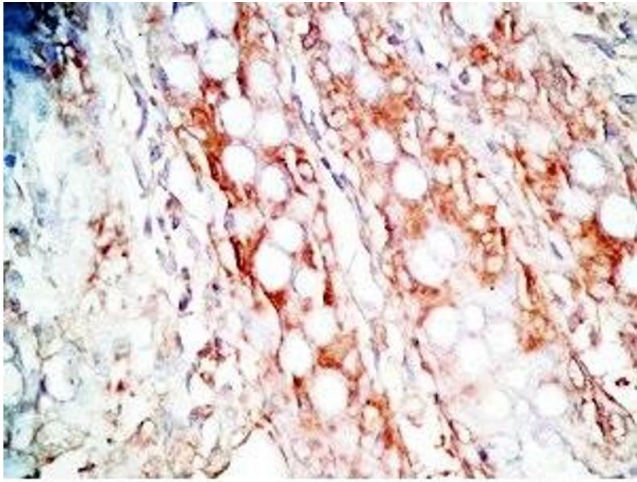
**Immunohistochemistry**

**Image 1.** Human stomach tissue was stained by Rabbit Anti-Gastrin Releasing Peptide (Porcine) Antibody



**Immunohistochemistry**

**Image 2.** Human stomach tissue was stained by Rabbit Anti-Gastrin Releasing Peptide (Porcine) Antibody



#### Immunohistochemistry

**Image 3.** Human colon cancer tissue was stained by Rabbit Anti-Gastrin Releasing Peptide (Porcine) Antibody