

Datasheet for ABIN2873213

anti-Cholecystokinin antibody (non-sulfated)

4 Images

[Go to Product page](#)

Overview

Quantity:	50 µL
Target:	Cholecystokinin (CCK)
Binding Specificity:	AA 26-33, non-sulfated
Reactivity:	Human, Rat, Mouse
Host:	Rabbit
Clonality:	Polyclonal
Application:	Immunohistochemistry (IHC)

Product Details

Immunogen:	5-10 mg of > 70% pure peptide conjugated to KLH.
Purification:	unpurified serum

Target Details

Target:	Cholecystokinin (CCK)
Alternative Name:	CCK (CCK Products)
Pathways:	TCR Signaling , Activation of Innate immune Response , Cellular Response to Molecule of Bacterial Origin , Positive Regulation of Immune Effector Process , Positive Regulation of Endopeptidase Activity , Toll-Like Receptors Cascades , Feeding Behaviour

Application Details

Application Notes:	Optimal working dilution should be determined by the investigator.
--------------------	--

Application Details

Restrictions: For Research Use only

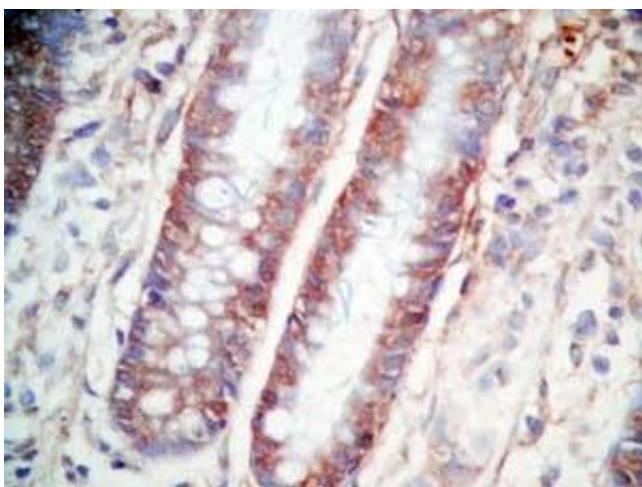
Handling

Format: Liquid

Storage: 4 °C, -20 °C

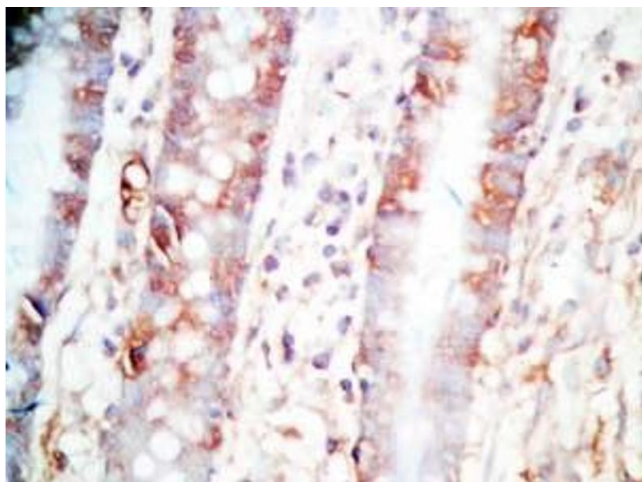
Storage Comment: Store antibodies at 2-4°C before and at -20°C after rehydration. The product is stable for approximately 3-6 weeks after rehydration at -20°C or below.

Images



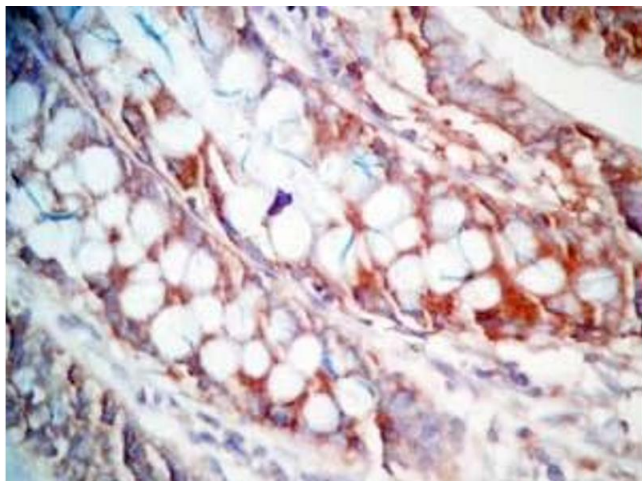
Immunohistochemistry

Image 1. Human colon tissue was stained by Rabbit Anti-CCK (26-33) (Human,Rat) Antibody



Immunohistochemistry

Image 2. Human colon tissue was stained by Rabbit Anti-CCK (26-33) (Human,Rat) Antibody



Immunohistochemistry

Image 3. Human colon tissue was stained by Rabbit Anti-CCK (26-33) (Human,Rat) Antibody

Please check the [product details page](#) for more images. Overall 4 images are available for ABIN2873213.