

Datasheet for ABIN2873250

anti-Adrenomedullin antibody (AA 1-44)[Go to Product page](#)

2 Images

Overview

Quantity:	100 µL
Target:	Adrenomedullin (ADM)
Binding Specificity:	AA 1-44
Reactivity:	Human
Host:	Rabbit
Clonality:	Polyclonal
Application:	Immunohistochemistry (IHC)

Product Details

Immunogen:	5-10 mg of > 70% pure peptide conjugated to KLH.
Purification:	unpurified serum

Target Details

Target:	Adrenomedullin (ADM)
Alternative Name:	Adrenomedullin (ADM Products)
Target Type:	Hormone
Pathways:	Hormone Transport , Hormone Activity , C21-Steroid Hormone Metabolic Process , cAMP Metabolic Process , Myometrial Relaxation and Contraction , Regulation of G-Protein Coupled Receptor Protein Signaling , Tube Formation

Application Details

Application Notes: Optimal working dilution should be determined by the investigator.

Restrictions: For Research Use only

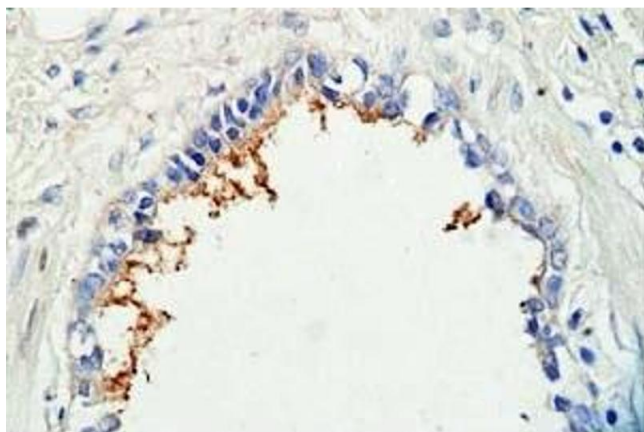
Handling

Format: Liquid

Storage: 4 °C, -20 °C

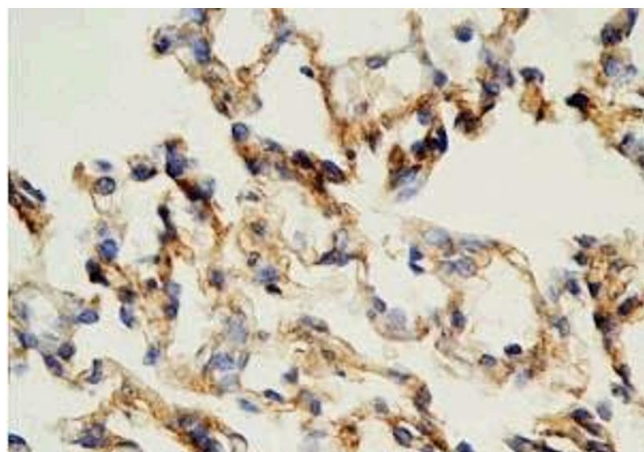
Storage Comment: Store antibodies at 2-4°C before and at -20°C after rehydration. The product is stable for approximately 3-6 weeks after rehydration at -20°C or below.

Images



Immunohistochemistry

Image 1. Human lung tissue was stained by Rabbit Anti-Adrenomedullin (1-44) (Human) Antibody



Immunohistochemistry

Image 2. Rat lung tissue was stained by Rabbit Anti-Adrenomedullin (1-44) (Human) Antibody