

Datasheet for ABIN2873290
anti-Cathepsin S antibody (AA 298-331)[Go to Product page](#)

4 Images

Overview

Quantity:	50 µL
Target:	Cathepsin S (CTSS)
Binding Specificity:	AA 298-331
Reactivity:	Human
Host:	Rabbit
Clonality:	Polyclonal
Conjugate:	This Cathepsin S antibody is un-conjugated
Application:	Immunohistochemistry (IHC)

Product Details

Immunogen:	5-10 mg of > 70% pure peptide conjugated to KLH.
Purification:	unpurified serum

Target Details

Target:	Cathepsin S (CTSS)
Alternative Name:	Cathepsin S (CTSS Products)
Pathways:	Activation of Innate immune Response , Toll-Like Receptors Cascades

Application Details

Application Notes:	Optimal working dilution should be determined by the investigator.
--------------------	--

Application Details

Restrictions: For Research Use only

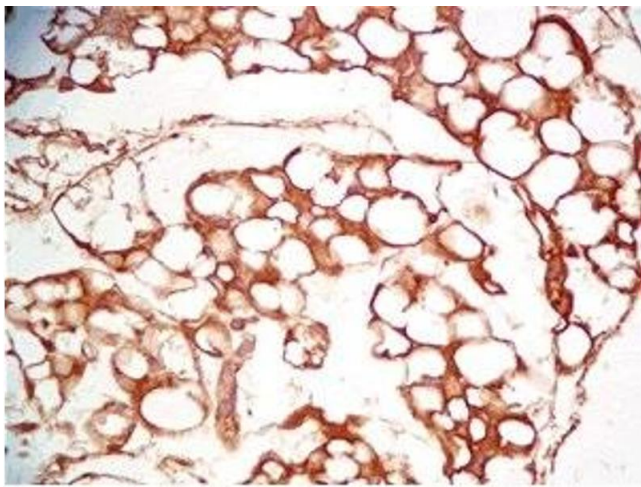
Handling

Format: Liquid

Storage: 4 °C, -20 °C

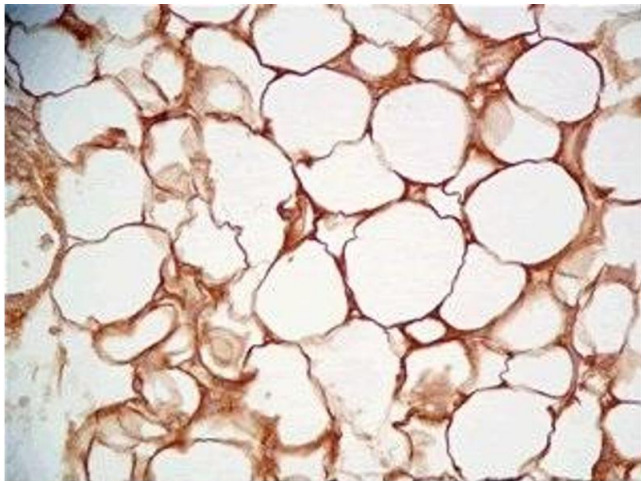
Storage Comment: Store antibodies at 2-4°C before and at -20°C after rehydration. The product is stable for approximately 3-6 weeks after rehydration at -20°C or below.

Images



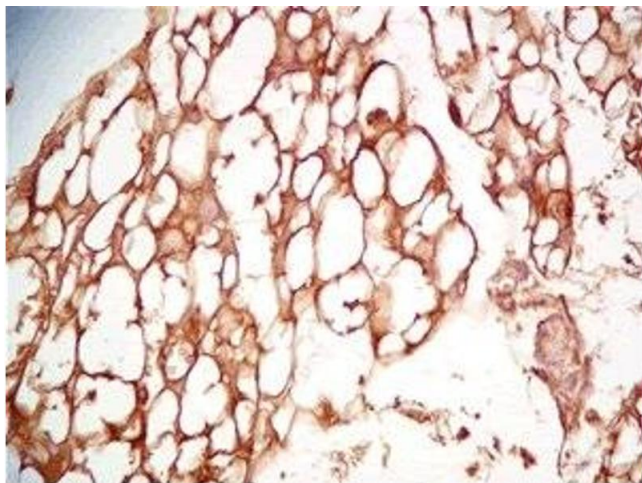
Immunohistochemistry

Image 1. Mouse visceral fat tissue was stained by Rabbit Anti-Cathepsin S (298-331) (Human) Serum



Immunohistochemistry

Image 2. Rat visceral fat tissue was stained by Rabbit Anti-Cathepsin S (298-331) (Human) Serum



Immunohistochemistry

Image 3. Mouse visceral fat tissue was stained by Rabbit Anti-Cathepsin S (298-331) (Human) Serum

Please check the [product details page](#) for more images. Overall 4 images are available for ABIN2873290.