



[Go to Product page](#)

Datasheet for ABIN2878830
anti-GHRHR antibody (AA 351-400)

1 Image

Overview

Quantity:	50 µL
Target:	GHRHR
Binding Specificity:	AA 351-400
Reactivity:	Human, Rat, Mouse
Host:	Rabbit
Clonality:	Polyclonal
Conjugate:	This GHRHR antibody is un-conjugated
Application:	Western Blotting (WB), ELISA, Immunofluorescence (IF), Immunohistochemistry (Paraffin-embedded Sections) (IHC (p)), Immunohistochemistry (IHC)

Product Details

Brand:	IHC-plus™
Immunogen:	Synthetic peptide from human GHRHR (aa351-400). Type of Immunogen: Synthetic peptide
Isotype:	IgG
Specificity:	GHRHR Antibody detects endogenous levels of total GHRHR protein.
Purification:	Immunoaffinity purified

Target Details

Target:	GHRHR
---------	-------

Target Details

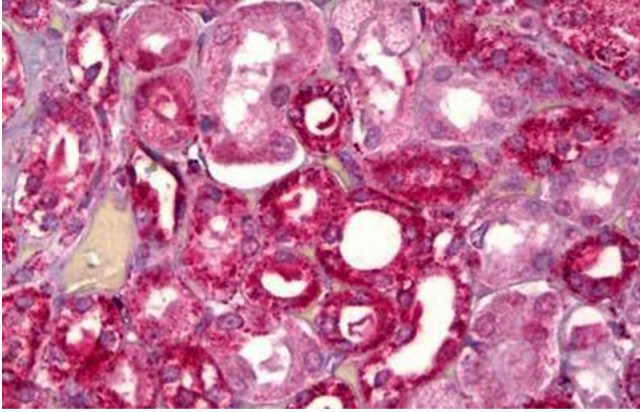
Alternative Name:	GHRHR (GHRHR Products)
Background:	Name/Gene ID: GHRHR Subfamily: Growth hormone releasing hormone Family: GPCR Synonyms: GHRHR, GHRFR, GRFR, IGHD1B, GRF receptor, GH-releasing hormone receptor, GHRH receptor, Ghrh-r
Gene ID:	2692
UniProt:	Q02643
Pathways:	Intracellular Steroid Hormone Receptor Signaling Pathway , Hormone Transport , Regulation of Intracellular Steroid Hormone Receptor Signaling , cAMP Metabolic Process

Application Details

Application Notes:	Approved: IF (1:100 - 1:500), IHC, IHC-P (1:200), Peptide-ELISA (1:1000), WB (1:500 - 1:1000)
Comment:	Target Species of Antibody: Human
Restrictions:	For Research Use only

Handling

Format:	Liquid
Concentration:	Lot specific
Buffer:	PBS (without Mg ²⁺ , Ca ²⁺), pH 7.4, 150 mM sodium chloride, 0.02 % sodium azide, 50 % glycerol
Preservative:	Sodium azide
Precaution of Use:	This product contains Sodium azide: a POISONOUS AND HAZARDOUS SUBSTANCE which should be handled by trained staff only.
Handling Advice:	avoid freeze thaw cycles.
Storage:	4 °C, -20 °C
Storage Comment:	Short term 4°C, long term aliquot and store at -20°C, avoid freeze-thaw cycles.



Immunohistochemistry

Image 1. Anti-GHRHR antibody IHC staining of human kidney, tubules. Immunohistochemistry of formalin-fixed, paraffin-embedded tissue after heat-induced antigen retrieval. Antibody ABIN959317 concentration 5 ug/ml.