



[Go to Product page](#)

Datasheet for ABIN2878854
anti-PARD3 antibody (AA 1141-1190)

1 Image

Overview

Quantity:	50 µL
Target:	PARD3
Binding Specificity:	AA 1141-1190
Reactivity:	Human, Mouse, Rat
Host:	Rabbit
Clonality:	Polyclonal
Conjugate:	This PARD3 antibody is un-conjugated
Application:	Western Blotting (WB), ELISA, Immunohistochemistry (IHC), Immunofluorescence (IF), Immunohistochemistry (Paraffin-embedded Sections) (IHC (p))

Product Details

Brand:	IHC-plus™
Immunogen:	Synthetic peptide from human PARD3 (aa1141-1190). Type of Immunogen: Synthetic peptide
Isotype:	IgG
Specificity:	PARD3 Antibody detects endogenous levels of total PARD3 protein.
Purification:	Immunoaffinity purified

Target Details

Target:	PARD3
---------	-------

Target Details

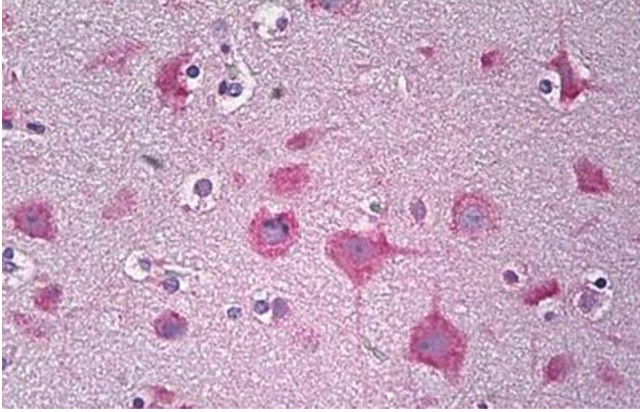
Alternative Name:	PARD3 / PAR3 (PARD3 Products)
Background:	Name/Gene ID: PARD3 Synonyms: PARD3, Baz, CTCL tumor antigen se2-5, PAR-3, PAR3A, PARD-3, PARD3A, SE2-5LT1, SE2-5T2, PAR3-alpha, PAR3alpha, Bazooka, PAR3, SE2-5L16
Gene ID:	56288
UniProt:	Q8TEW0
Pathways:	Cell-Cell Junction Organization

Application Details

Application Notes:	Approved: IF (1:100 - 1:500), IHC, IHC-P (1:100), Peptide-ELISA (1:20000), WB (1:500 - 1:1000)
Comment:	Target Species of Antibody: Human
Restrictions:	For Research Use only

Handling

Format:	Liquid
Concentration:	Lot specific
Buffer:	PBS (without Mg ²⁺ , Ca ²⁺), pH 7.4, 150 mM sodium chloride, 0.02 % sodium azide, 50 % glycerol
Preservative:	Sodium azide
Precaution of Use:	This product contains Sodium azide: a POISONOUS AND HAZARDOUS SUBSTANCE which should be handled by trained staff only.
Handling Advice:	avoid freeze thaw cycles.
Storage:	4 °C, -20 °C
Storage Comment:	Short term 4°C, long term aliquot and store at -20°C, avoid freeze-thaw cycles.



Immunohistochemistry

Image 1. Anti-PARD3 antibody IHC staining of human brain, cortex neurons. Immunohistochemistry of formalin-fixed, paraffin-embedded tissue after heat-induced antigen retrieval. Antibody ABIN959358 concentration 10 ug/ml.