



[Go to Product page](#)

Datasheet for ABIN2878890
anti-NOL3 antibody (AA 159-208)

1 Image

Overview

Quantity:	50 µL
Target:	NOL3
Binding Specificity:	AA 159-208
Reactivity:	Human
Host:	Rabbit
Clonality:	Polyclonal
Conjugate:	This NOL3 antibody is un-conjugated
Application:	Western Blotting (WB), ELISA, Immunohistochemistry (IHC), Immunohistochemistry (Paraffin-embedded Sections) (IHC (p))

Product Details

Brand:	IHC-plus™
Immunogen:	Synthetic peptide from human ARC (aa159-208). Type of Immunogen: Synthetic peptide
Isotype:	IgG
Specificity:	ARC Antibody detects endogenous levels of total ARC protein.
Purification:	Immunoaffinity purified

Target Details

Target:	NOL3
---------	------

Target Details

Alternative Name: NOL3 / ARC ([NOL3 Products](#))

Background: Name/Gene ID: NOL3
Family: Apoptosis

Synonyms: NOL3, Apoptosis repressor with CARD, CARD2, FCM, NOP, Nucleolar protein 3, Nucleolar protein of 30 kDa, MYP, NOP30

Gene ID: 8996

UniProt: [O60936](#)

Application Details

Application Notes: Approved: IHC, IHC-P (1:100), Peptide-ELISA (1:20000), WB (1:500 - 1:1000)

Comment: Target Species of Antibody: Human

Restrictions: For Research Use only

Handling

Format: Liquid

Concentration: Lot specific

Buffer: PBS (without Mg²⁺, Ca²⁺), pH 7.4, 150 mM sodium chloride, 0.02 % sodium azide, 50 % glycerol

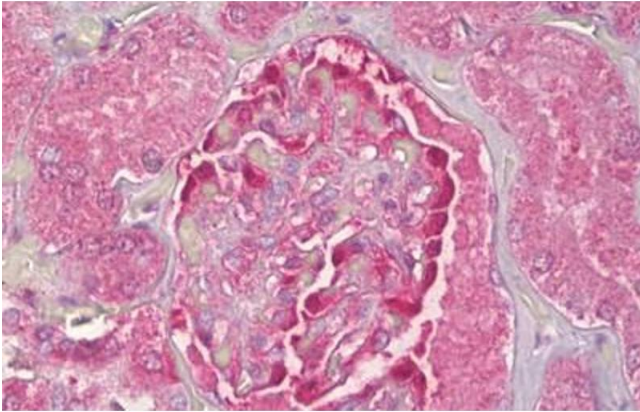
Preservative: Sodium azide

Precaution of Use: This product contains Sodium azide: a POISONOUS AND HAZARDOUS SUBSTANCE which should be handled by trained staff only.

Handling Advice: avoid freeze thaw cycles.

Storage: 4 °C, -20 °C

Storage Comment: Short term 4°C, long term aliquot and store at -20°C, avoid freeze-thaw cycles.



Immunohistochemistry

Image 1. Anti-NOL3 antibody IHC staining of human kidney, glomeruli. Immunohistochemistry of formalin-fixed, paraffin-embedded tissue after heat-induced antigen retrieval. Antibody ABIN959355 concentration 10 ug/ml.