



[Go to Product page](#)

Datasheet for ABIN2879077

anti-SLC16A12 antibody (AA 115-164)

1 Image

Overview

Quantity:	50 µL
Target:	SLC16A12
Binding Specificity:	AA 115-164
Reactivity:	Human, Mouse
Host:	Rabbit
Clonality:	Polyclonal
Conjugate:	This SLC16A12 antibody is un-conjugated
Application:	ELISA, Immunohistochemistry (IHC), Immunohistochemistry (Paraffin-embedded Sections) (IHC (p))

Product Details

Brand:	IHC-plus™
Immunogen:	Synthetic peptide from human MOT12 (aa115-164). Type of Immunogen: Synthetic peptide
Isotype:	IgG
Specificity:	MOT12 Antibody detects endogenous levels of total MOT12 protein.
Purification:	Immunoaffinity purified

Target Details

Target:	SLC16A12
---------	----------

Target Details

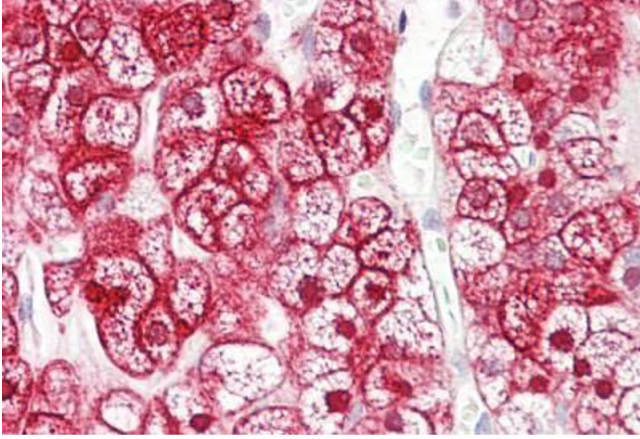
Alternative Name:	SLC16A12 / MCT12 (SLC16A12 Products)
Background:	Name/Gene ID: SLC16A12 Synonyms: SLC16A12, CJMG, MCT 12, Monocarboxylate transporter 12, MCT12
Gene ID:	387700
UniProt:	Q6ZSM3

Application Details

Application Notes:	Approved: IHC, IHC-P (1:100), Peptide-ELISA (1:20000)
Comment:	Target Species of Antibody: Human
Restrictions:	For Research Use only

Handling

Format:	Liquid
Concentration:	Lot specific
Buffer:	PBS (without Mg ²⁺ , Ca ²⁺), pH 7.4, 150 mM sodium chloride, 0.02 % sodium azide, 50 % glycerol
Preservative:	Sodium azide
Precaution of Use:	This product contains Sodium azide: a POISONOUS AND HAZARDOUS SUBSTANCE which should be handled by trained staff only.
Storage:	-20 °C
Storage Comment:	Store at -20°C for up to 1 year.
Expiry Date:	12 months



Immunohistochemistry

Image 1. Anti- Anti-SLC16A12 / MCT12 antibody IHC staining of human adrenal. Immunohistochemistry of formalin-fixed, paraffin-embedded tissue after heat-induced antigen retrieval. Antibody ABIN1104314 concentration 4 ug/ml.