



Datasheet for ABIN2879127

anti-XRCC6/XRCC5 antibody (AA 683-732)



[Go to Product page](#)

3 Images

Overview

Quantity:	50 µL
Target:	XRCC6/XRCC5
Binding Specificity:	AA 683-732
Reactivity:	Human
Host:	Rabbit
Clonality:	Polyclonal
Conjugate:	This XRCC6/XRCC5 antibody is un-conjugated
Application:	Immunofluorescence (IF), Immunohistochemistry (IHC), Immunohistochemistry (Paraffin-embedded Sections) (IHC (p)), ELISA, Western Blotting (WB)

Product Details

Brand:	IHC-plus™
Immunogen:	Synthetic peptide from human Ku70/80 (aa683-732). Type of Immunogen: Synthetic peptide
Isotype:	IgG
Specificity:	Ku70/80 Antibody detects endogenous levels of total Ku70/80 protein.
Purification:	Immunoaffinity purified

Target Details

Target:	XRCC6/XRCC5
---------	-------------

Target Details

Alternative Name: Ku70/Ku80 (XRCC6/XRCC5) ([XRCC6/XRCC5 Products](#))

Background: This antibody detects: Ku70+Ku80 / XRCC6+XRCC5

Application Details

Application Notes: Approved: IF (1:100 - 1:500), IHC, IHC-P (1:200), Peptide-ELISA (1:20000), WB (1:500 - 1:1000)

Comment: Target Species of Antibody: Human

Restrictions: For Research Use only

Handling

Format: Liquid

Concentration: Lot specific

Buffer: PBS (without Mg²⁺, Ca²⁺), pH 7.4, 150 mM sodium chloride, 0.02 % sodium azide, 50 % glycerol

Preservative: Sodium azide

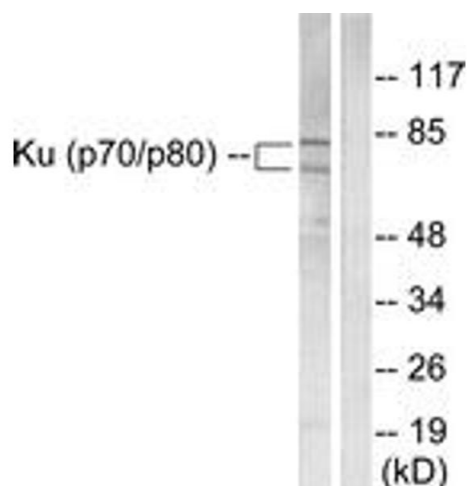
Precaution of Use: This product contains Sodium azide: a POISONOUS AND HAZARDOUS SUBSTANCE which should be handled by trained staff only.

Storage: -20 °C

Storage Comment: Store at -20°C for up to 1 year.

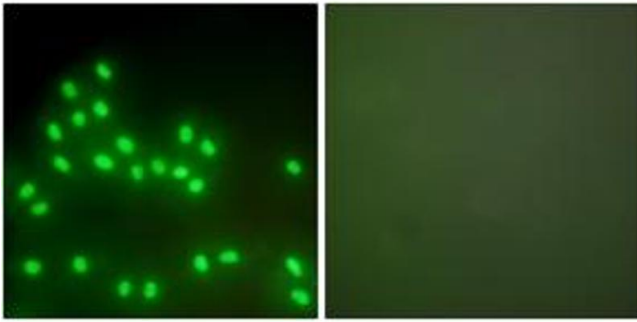
Expiry Date: 12 months

Images



Western Blotting

Image 1.



Immunofluorescence

Image 2.

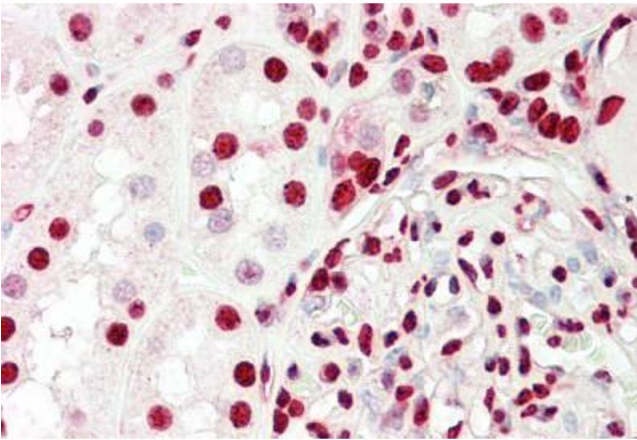


Image 3.