



[Go to Product page](#)

Datasheet for ABIN2879228  
**anti-HEXIM1 antibody (AA 181-230)**

1 Image

### Overview

Quantity:	50 µL
Target:	HEXIM1
Binding Specificity:	AA 181-230
Reactivity:	Human, Mouse, Rat
Host:	Rabbit
Clonality:	Polyclonal
Conjugate:	This HEXIM1 antibody is un-conjugated
Application:	Western Blotting (WB), ELISA, Immunohistochemistry (IHC), Immunofluorescence (IF), Immunohistochemistry (Paraffin-embedded Sections) (IHC (p))

### Product Details

Brand:	IHC-plus™
Immunogen:	Synthetic peptide from human HEXIM1 (aa181-230). Type of Immunogen: Synthetic peptide
Isotype:	IgG
Specificity:	HEXIM1 Antibody detects endogenous levels of total HEXIM1 protein.
Purification:	Immunoaffinity purified

### Target Details

Target:	HEXIM1
---------	--------

## Target Details

---

Alternative Name: [HEXIM1 \(HEXIM1 Products\)](#)

Background: Name/Gene ID: HEXIM1

Synonyms: HEXIM1, Cardiac lineage protein 1, CLP-1, EDG1, HMBA-inducible, Menage a quatre 1, Menage a quatre protein 1, Protein HEXIM1, MAQ1, HIS1

Gene ID: 10614

UniProt: [O94992](#)

## Application Details

---

Application Notes: Approved: IF (1:100 - 1:500), IHC, IHC-P (1:50), Peptide-ELISA (1:10000), WB (1:500 - 1:1000)

Comment: Target Species of Antibody: Human

Restrictions: For Research Use only

## Handling

---

Format: Liquid

Concentration: Lot specific

Buffer: PBS (without Mg<sup>2+</sup>, Ca<sup>2+</sup>), pH 7.4, 150 mM sodium chloride, 0.02 % sodium azide, 50 % glycerol

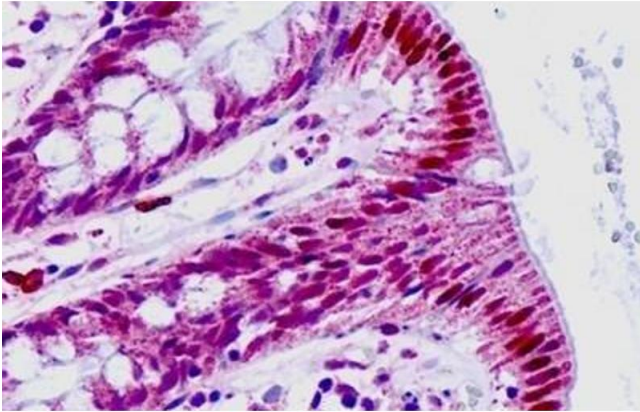
Preservative: Sodium azide

Precaution of Use: This product contains Sodium azide: a POISONOUS AND HAZARDOUS SUBSTANCE which should be handled by trained staff only.

Storage: -20 °C

Storage Comment: Store at -20°C for up to 1 year.

Expiry Date: 12 months



### Immunohistochemistry

**Image 1.** Human, Small intestine: Formalin-Fixed Paraffin-Embedded (FFPE)