



[Go to Product page](#)

Datasheet for ABIN2879237

## anti-Glycerol Kinase antibody (AA 461-510)

### 1 Image

#### Overview

Quantity:	50 µL
Target:	Glycerol Kinase (GK)
Binding Specificity:	AA 461-510
Reactivity:	Human, Mouse, Rat
Host:	Rabbit
Clonality:	Polyclonal
Conjugate:	This Glycerol Kinase antibody is un-conjugated
Application:	ELISA, Western Blotting (WB), Immunohistochemistry (IHC), Immunofluorescence (IF), Immunohistochemistry (Paraffin-embedded Sections) (IHC (p))

#### Product Details

Brand:	IHC-plus™
Immunogen:	Synthetic peptide from human GK (aa461-510). Type of Immunogen: Synthetic peptide
Isotype:	IgG
Specificity:	GK Antibody detects endogenous levels of total GK protein.
Purification:	Immunoaffinity purified

#### Target Details

Target:	Glycerol Kinase (GK)
---------	----------------------

## Target Details

---

Alternative Name:	GK / Glycerol Kinase ( <a href="#">GK Products</a> )
Background:	Name/Gene ID: GK Family: Non-protein Kinase  Synonyms: GK, GKD, GK1, Glycerokinase, Glycerol kinase
Gene ID:	2710
UniProt:	<a href="#">P32189</a>

## Application Details

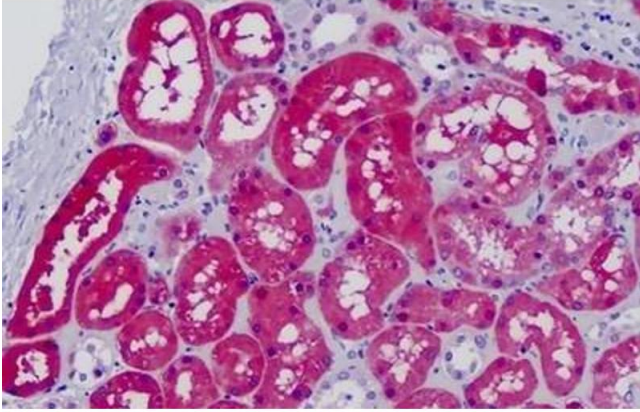
---

Application Notes:	Approved: IF (1:100 - 1:500), IHC, IHC-P (1:50), Peptide-ELISA (1:20000), WB (1:500 - 1:1000)
Comment:	Target Species of Antibody: Human
Restrictions:	For Research Use only

## Handling

---

Format:	Liquid
Concentration:	Lot specific
Buffer:	PBS (without Mg <sup>2+</sup> , Ca <sup>2+</sup> ), pH 7.4, 150 mM sodium chloride, 0.02 % sodium azide, 50 % glycerol
Preservative:	Sodium azide
Precaution of Use:	This product contains Sodium azide: a POISONOUS AND HAZARDOUS SUBSTANCE which should be handled by trained staff only.
Storage:	-20 °C
Storage Comment:	Store at -20°C for up to 1 year.
Expiry Date:	12 months



### Immunohistochemistry

**Image 1.** Human Kidney: Formalin-Fixed Paraffin-Embedded (FFPE)