



[Go to Product page](#)

Datasheet for ABIN2879259

## anti-CYP21A2 antibody (AA 151-200)

### 1 Image

#### Overview

Quantity:	50 µL
Target:	CYP21A2
Binding Specificity:	AA 151-200
Reactivity:	Human
Host:	Rabbit
Clonality:	Polyclonal
Conjugate:	This CYP21A2 antibody is un-conjugated
Application:	Western Blotting (WB), ELISA, Immunohistochemistry (IHC), Immunohistochemistry (Paraffin-embedded Sections) (IHC (p))

#### Product Details

Brand:	IHC-plus™
Immunogen:	Synthetic peptide from human Cytochrome P450 21A2 (aa151-200). Type of Immunogen: Synthetic peptide
Isotype:	IgG
Specificity:	Cytochrome P450 21A2 Antibody detects endogenous levels of total Cytochrome P450 21A2 protein.
Purification:	Immunoaffinity purified

## Target Details

---

Target:	CYP21A2
Alternative Name:	CYP21A2 ( <a href="#">CYP21A2 Products</a> )
Background:	Name/Gene ID: CYP21A2 Family: Cytochrome P450  Synonyms: CYP21A2, 21-OHase, CAH1, CYP21B, Cytochrome P450-C21, Cytochrome P450 21, Cytochrome P450 XXI, p450c21B, CA21H, CYP21, Cytochrome P-450c21, Cytochrome P450-C21B, Steroid 21-hydroxylase, Steroid 21-monooxygenase
Gene ID:	1589
UniProt:	<a href="#">P08686</a>
Pathways:	<a href="#">Metabolism of Steroid Hormones and Vitamin D</a> , <a href="#">Steroid Hormone Biosynthesis</a> , <a href="#">C21-Steroid Hormone Metabolic Process</a>

## Application Details

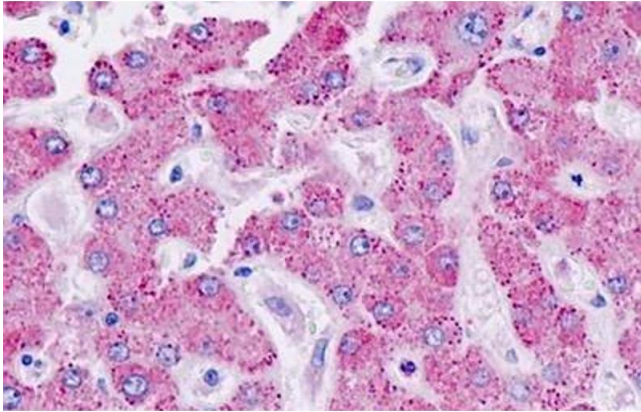
---

Application Notes:	Approved: IHC, IHC-P (1:50), Peptide-ELISA (1:20000), WB (1:500 - 1:1000)
Comment:	Target Species of Antibody: Human
Restrictions:	For Research Use only

## Handling

---

Format:	Liquid
Concentration:	Lot specific
Buffer:	PBS (without Mg <sup>2+</sup> , Ca <sup>2+</sup> ), pH 7.4, 150 mM sodium chloride, 0.02 % sodium azide, 50 % glycerol
Preservative:	Sodium azide
Precaution of Use:	This product contains Sodium azide: a POISONOUS AND HAZARDOUS SUBSTANCE which should be handled by trained staff only.
Storage:	-20 °C
Storage Comment:	Store at -20°C for up to 1 year.
Expiry Date:	12 months



### Immunohistochemistry

**Image 1.** Human Liver: Formalin-Fixed, Paraffin-Embedded (FFPE)