



[Go to Product page](#)

Datasheet for ABIN2879262  
**anti-RAD21 antibody (AA 521-570)**

1 Image

### Overview

Quantity:	50 µL
Target:	RAD21
Binding Specificity:	AA 521-570
Reactivity:	Human, Mouse
Host:	Rabbit
Clonality:	Polyclonal
Conjugate:	This RAD21 antibody is un-conjugated
Application:	Western Blotting (WB), ELISA, Immunohistochemistry (IHC), Immunohistochemistry (Paraffin-embedded Sections) (IHC (p))

### Product Details

Brand:	IHC-plus™
Immunogen:	Synthetic peptide from human RAD21 (aa521-570). Type of Immunogen: Synthetic peptide
Isotype:	IgG
Specificity:	RAD21 Antibody detects endogenous levels of total RAD21 protein.
Purification:	Immunoaffinity purified

### Target Details

Target:	RAD21
---------	-------

## Target Details

---

Alternative Name:	RAD21 ( <a href="#">RAD21 Products</a> )
Background:	Name/Gene ID: RAD21  Synonyms: RAD21, CDLS4, HR21, KIAA0078, HHR21, NXP-1, NXP1, RAD21 (S. pombe) homolog, MCD1, Nuclear matrix protein 1, RAD21 homolog (S. pombe), HRAD21, SCC1, SCC1 homolog
Gene ID:	5885
UniProt:	<a href="#">O60216</a>
Pathways:	<a href="#">Positive Regulation of Endopeptidase Activity</a>

## Application Details

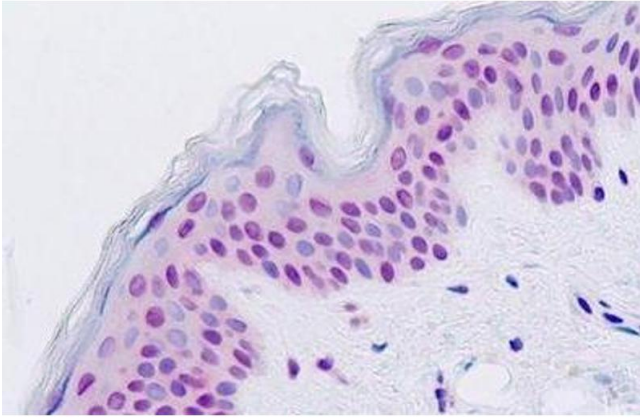
---

Application Notes:	Approved: IHC, IHC-P (1:50), Peptide-ELISA (1:1000), WB (1:500 - 1:1000)
Comment:	Target Species of Antibody: Human
Restrictions:	For Research Use only

## Handling

---

Format:	Liquid
Concentration:	Lot specific
Buffer:	PBS (without Mg <sup>2+</sup> , Ca <sup>2+</sup> ), pH 7.4, 150 mM sodium chloride, 0.02 % sodium azide, 50 % glycerol
Preservative:	Sodium azide
Precaution of Use:	This product contains Sodium azide: a POISONOUS AND HAZARDOUS SUBSTANCE which should be handled by trained staff only.
Storage:	-20 °C
Storage Comment:	Store at -20°C for up to 1 year.
Expiry Date:	12 months



### Immunohistochemistry

**Image 1.** Human Skin: Formalin-Fixed, Paraffin-Embedded (FFPE)