



[Go to Product page](#)

Datasheet for ABIN2879276
anti-PLAGL1 antibody (AA 311-360)

1 Image

Overview

| | |
|----------------------|---|
| Quantity: | 50 µL |
| Target: | PLAGL1 |
| Binding Specificity: | AA 311-360 |
| Reactivity: | Human |
| Host: | Rabbit |
| Clonality: | Polyclonal |
| Conjugate: | This PLAGL1 antibody is un-conjugated |
| Application: | Western Blotting (WB), ELISA, Immunohistochemistry (IHC), Immunohistochemistry (Paraffin-embedded Sections) (IHC (p)) |

Product Details

| | |
|---------------|--|
| Brand: | IHC-plus™ |
| Immunogen: | Synthetic peptide from human PLAGL1 (aa311-360). Type of Immunogen: Synthetic peptide |
| Isotype: | IgG |
| Specificity: | PLAGL1 Antibody detects endogenous levels of total PLAGL1 protein. |
| Purification: | Immunoaffinity purified |

Target Details

| | |
|---------|--------|
| Target: | PLAGL1 |
|---------|--------|

Target Details

Alternative Name: [PLAGL1 / ZAC \(PLAGL1 Products\)](#)

Background: Name/Gene ID: PLAGL1

Synonyms: PLAGL1, Lost on transformation 1, LOT1, PLAG-like 1, LOT-1, ZAC tumor supressor, Zinc finger protein PLAGL1, Tumor supressor ZAC, ZAC, ZAC1

Gene ID: 5325

UniProt: [Q9UM63](#)

Application Details

Application Notes: Approved: IHC, IHC-P (1:50), Peptide-ELISA (1:10000), WB (1:500 - 1:1000)

Comment: Target Species of Antibody: Human

Restrictions: For Research Use only

Handling

Format: Liquid

Concentration: Lot specific

Buffer: PBS (without Mg²⁺, Ca²⁺), pH 7.4, 150 mM sodium chloride, 0.02 % sodium azide, 50 % glycerol

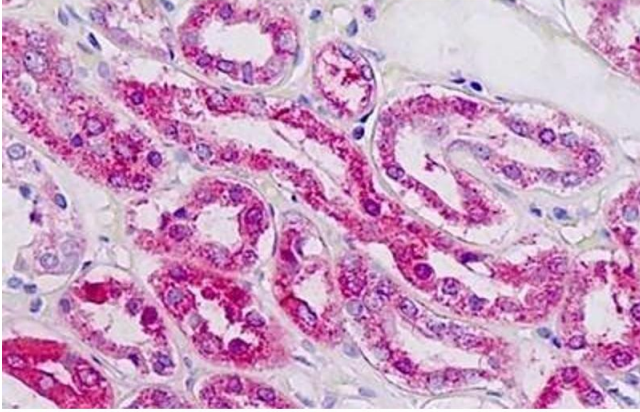
Preservative: Sodium azide

Precaution of Use: This product contains Sodium azide: a POISONOUS AND HAZARDOUS SUBSTANCE which should be handled by trained staff only.

Storage: -20 °C

Storage Comment: Store at -20°C for up to 1 year.

Expiry Date: 12 months



Immunohistochemistry

Image 1. Human Kidney: Formalin-Fixed, Paraffin-Embedded (FFPE)