



[Go to Product page](#)

Datasheet for ABIN2879288

## anti-KLKB1 antibody (Cleaved-Arg390)

### 1 Image

#### Overview

Quantity:	50 µL
Target:	KLKB1
Binding Specificity:	AA 341-390, Cleaved-Arg390
Reactivity:	Human
Host:	Rabbit
Clonality:	Polyclonal
Conjugate:	This KLKB1 antibody is un-conjugated
Application:	ELISA, Western Blotting (WB), Immunohistochemistry (IHC), Immunohistochemistry (Paraffin-embedded Sections) (IHC (p))

#### Product Details

Brand:	IHC-plus™
Immunogen:	Synthetic peptide from human KLKB1 (aa341-390). Type of Immunogen: Synthetic peptide
Isotype:	IgG
Specificity:	KLKB1 (heavy chain,Cleaved-Arg390) Antibody detects endogenous levels of fragment of activated KLKB1 resulting from cleavage adjacent to Arg390.
Purification:	Immunoaffinity purified

## Target Details

---

Target:	KLKB1
Alternative Name:	KLKB1 / Plasma Kallikrein ( <a href="#">KLKB1 Products</a> )
Background:	Name/Gene ID: KLKB1 Subfamily: Serine S1 Family: Protease  Synonyms: KLKB1, Fletcher factor deficiency, Fletcher factor, Kininogenin, Plasma kallikrein, PKK deficiency, Plasma kallikrein heavy chain, PPK, Prekallikrein deficiency, Plasma kallikrein light chain, Plasma prekallikrein, Kallikrein 3
Gene ID:	3818
UniProt:	<a href="#">P03952</a>
Pathways:	<a href="#">Complement System</a> , <a href="#">Brown Fat Cell Differentiation</a>

## Application Details

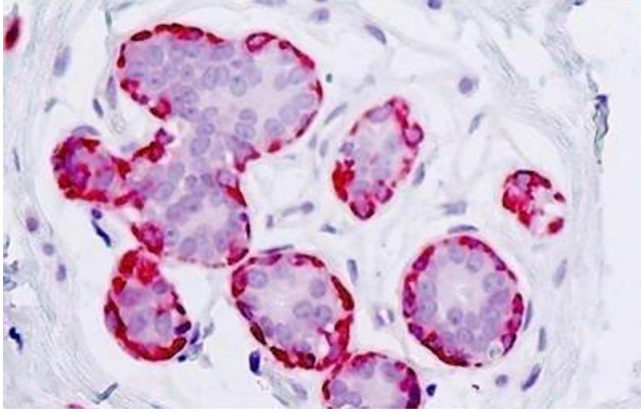
---

Application Notes:	Approved: IHC, IHC-P (1:50), Peptide-ELISA (1:10000), WB (1:500 - 1:1000)
Comment:	Target Species of Antibody: Human
Restrictions:	For Research Use only

## Handling

---

Format:	Liquid
Concentration:	Lot specific
Buffer:	PBS (without Mg <sup>2+</sup> , Ca <sup>2+</sup> ), pH 7.4, 150 mM sodium chloride, 0.02 % sodium azide, 50 % glycerol
Preservative:	Sodium azide
Precaution of Use:	This product contains Sodium azide: a POISONOUS AND HAZARDOUS SUBSTANCE which should be handled by trained staff only.
Storage:	-20 °C
Storage Comment:	Store at -20°C for up to 1 year.
Expiry Date:	12 months



### Immunohistochemistry

**Image 1.** Human Breast: Formalin-Fixed, Paraffin-Embedded (FFPE)