



[Go to Product page](#)

Datasheet for ABIN2879364
anti-KIR5.1 antibody (AA 369-418)

1 Image

Overview

Quantity:	50 µL
Target:	KIR5.1 (KCNJ16)
Binding Specificity:	AA 369-418
Reactivity:	Human, Mouse
Host:	Rabbit
Clonality:	Polyclonal
Conjugate:	This KIR5.1 antibody is un-conjugated
Application:	Western Blotting (WB), ELISA, Immunohistochemistry (IHC), Immunofluorescence (IF), Immunohistochemistry (Paraffin-embedded Sections) (IHC (p))

Product Details

Brand:	IHC-plus™
Immunogen:	Synthetic peptide from mouse Kir5.1 (aa369-418). Type of Immunogen: Synthetic peptide
Isotype:	IgG
Specificity:	Kir5.1 Antibody detects endogenous levels of total Kir5.1 protein.
Purification:	Immunoaffinity purified

Target Details

Target:	KIR5.1 (KCNJ16)
---------	-----------------

Target Details

Alternative Name: KCNJ16 / Kir5.1 ([KCNJ16 Products](#))

Background: Name/Gene ID: KCNJ16
Subfamily: Potassium channel - inward-rectifying
Family: Ion Channel

Synonyms: KCNJ16, BIR9, KIR5.1

Gene ID: 3773

Application Details

Application Notes: Approved: IF (1:100 - 1:500), IHC, IHC-P (1:50), Peptide-ELISA (1:10000), WB (1:500 - 1:1000)

Comment: Target Species of Antibody: Mouse

Restrictions: For Research Use only

Handling

Format: Liquid

Concentration: Lot specific

Buffer: PBS (without Mg²⁺, Ca²⁺), pH 7.4, 150 mM sodium chloride, 0.02 % sodium azide, 50 % glycerol

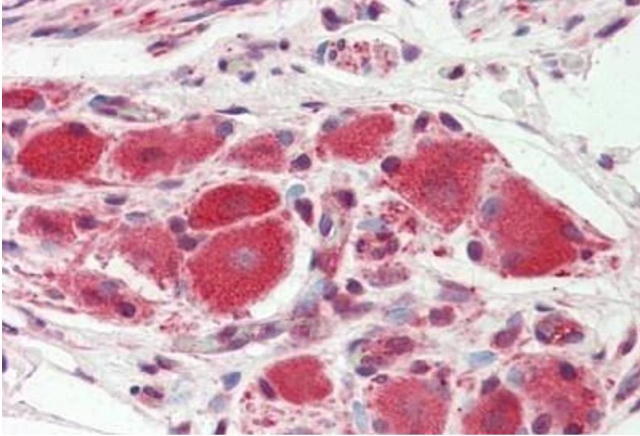
Preservative: Sodium azide

Precaution of Use: This product contains Sodium azide: a POISONOUS AND HAZARDOUS SUBSTANCE which should be handled by trained staff only.

Storage: -20 °C

Storage Comment: Store at -20°C for up to 1 year.

Expiry Date: 12 months



Immunohistochemistry

Image 1. Human Ganglion Cells (Prostate): Formalin-Fixed, Paraffin-Embedded (FFPE)