

Datasheet for ABIN2879376  
**anti-EEF2K antibody (AA 336-385)**



[Go to Product page](#)

1 Image

## Overview

Quantity:	50 µL
Target:	EEF2K
Binding Specificity:	AA 336-385
Reactivity:	Human, Rat, Mouse
Host:	Rabbit
Clonality:	Polyclonal
Conjugate:	This EEF2K antibody is un-conjugated
Application:	Western Blotting (WB), ELISA, Immunohistochemistry (IHC), Immunohistochemistry (Paraffin-embedded Sections) (IHC (p))

## Product Details

Brand:	IHC-plus™
Immunogen:	Synthetic peptide from human eEF2K (aa336-385). Type of Immunogen: Synthetic peptide
Isotype:	IgG
Specificity:	EEF2K Antibody detects endogenous levels of total eEF2K protein.
Purification:	Immunoaffinity purified

## Target Details

Target:	EEF2K
---------	-------

## Target Details

---

Alternative Name:	EEF2K ( <a href="#">EEF2K Products</a> )
Background:	Name/Gene ID: EEF2K Subfamily: Alpha-kinases Family: Protein Kinase  Synonyms: EEF2K, EEF-2K, Elongation factor-2 kinase, EEF-2 kinase, HSU93850
Gene ID:	29904
Pathways:	<a href="#">AMPK Signaling</a>

## Application Details

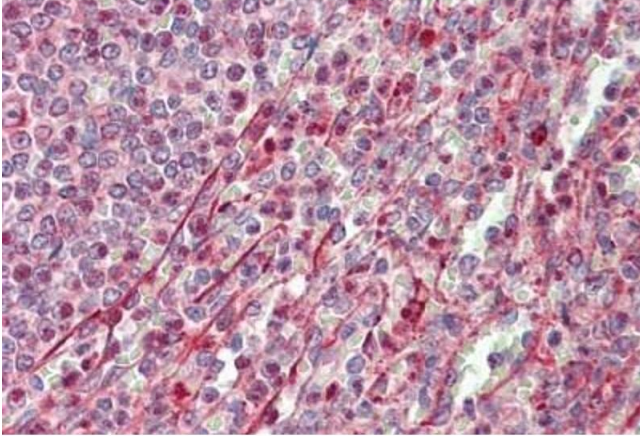
---

Application Notes:	Approved: IHC, IHC-P (1:100), Peptide-ELISA (1:40000), WB (1:500 - 1:1000)
Comment:	Target Species of Antibody: Human
Restrictions:	For Research Use only

## Handling

---

Format:	Liquid
Concentration:	Lot specific
Buffer:	PBS (without Mg <sup>2+</sup> , Ca <sup>2+</sup> ), pH 7.4, 150 mM sodium chloride, 0.02 % sodium azide, 50 % glycerol
Preservative:	Sodium azide
Precaution of Use:	This product contains Sodium azide: a POISONOUS AND HAZARDOUS SUBSTANCE which should be handled by trained staff only.
Storage:	-20 °C
Storage Comment:	Store at -20°C for up to 1 year.
Expiry Date:	12 months



### Immunohistochemistry

**Image 1.** Human Spleen: Formalin-Fixed, Paraffin-Embedded (FFPE)