



[Go to Product page](#)

Datasheet for ABIN2879406  
**anti-LDOC1L antibody (AA 141-190)**

1 Image

### Overview

Quantity:	50 µL
Target:	LDOC1L
Binding Specificity:	AA 141-190
Reactivity:	Human, Mouse
Host:	Rabbit
Clonality:	Polyclonal
Conjugate:	This LDOC1L antibody is un-conjugated
Application:	Western Blotting (WB), ELISA, Immunohistochemistry (IHC), Immunohistochemistry (Paraffin-embedded Sections) (IHC (p))

### Product Details

Brand:	IHC-plus™
Immunogen:	Synthetic peptide from human LDOC1L (aa141-190). Type of Immunogen: Synthetic peptide
Isotype:	IgG
Specificity:	LDOC1L Antibody detects endogenous levels of total LDOC1L protein.
Purification:	Immunoaffinity purified

### Target Details

Target:	LDOC1L
---------	--------

## Target Details

---

Alternative Name: LDOC1L ([LDOC1L Products](#))

---

Background: Name/Gene ID: LDOC1L

Synonyms: LDOC1L, DJ1033E15.2, Mart6, Protein LDOC1L, Mar6

---

Gene ID: 84247

## Application Details

---

Application Notes: Approved: IHC, IHC-P (1:100), Peptide-ELISA (1:1000), WB (1:500 - 1:1000)

---

Comment: Target Species of Antibody: Human

---

Restrictions: For Research Use only

## Handling

---

Format: Liquid

---

Concentration: Lot specific

---

Buffer: PBS (without Mg<sup>2+</sup>, Ca<sup>2+</sup>), pH 7.4, 150 mM sodium chloride, 0.02 % sodium azide, 50 % glycerol

---

Preservative: Sodium azide

---

Precaution of Use: This product contains Sodium azide: a POISONOUS AND HAZARDOUS SUBSTANCE which should be handled by trained staff only.

---

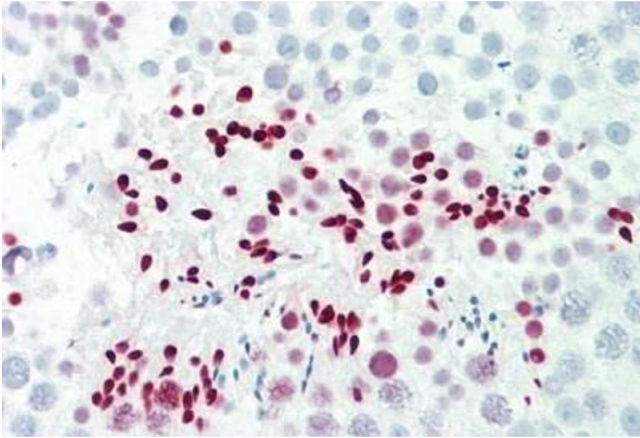
Storage: -20 °C

---

Storage Comment: Store at -20°C for up to 1 year.

---

Expiry Date: 12 months



### Immunohistochemistry

**Image 1.** Human Testis: Formalin-Fixed, Paraffin-Embedded (FFPE)