



[Go to Product page](#)

Datasheet for ABIN2879443

anti-ADORA1 antibody (Asp326)

2 Images

Overview

Quantity:	50 µL
Target:	ADORA1
Binding Specificity:	Asp326
Reactivity:	Human, Rat, Mouse
Host:	Rabbit
Clonality:	Polyclonal
Conjugate:	This ADORA1 antibody is un-conjugated
Application:	Western Blotting (WB), Immunohistochemistry (IHC), Immunofluorescence (IF), Immunohistochemistry (Paraffin-embedded Sections) (IHC (p))

Product Details

Brand:	IHC-plus™
Immunogen:	Synthetic peptide around Asp326 of human Adenosine A1 Receptor / ADORA1 Type of Immunogen: Synthetic peptide
Specificity:	Human Adenosine A1 Receptor / ADORA1
Purification:	Immunoaffinity purified

Target Details

Target:	ADORA1
Alternative Name:	ADORA1 / Adenosine A1 Receptor (ADORA1 Products)

Target Details

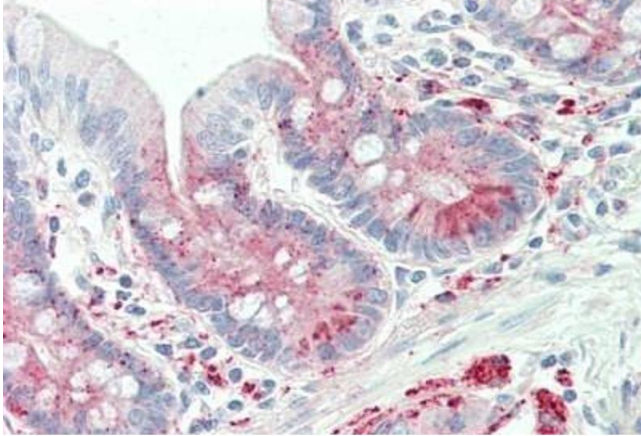
Background:	Name/Gene ID: ADORA1 Subfamily: Adenosine Family: GPCR Synonyms: ADORA1, A1 adenosine receptor, A1ar, Adenosine A1 receptor, Adenosine receptor A1, ADO-A1 receptor, RDC7
Gene ID:	134
Pathways:	EGFR Signaling Pathway , Negative Regulation of Hormone Secretion , Synaptic Membrane

Application Details

Application Notes:	Approved: IF (1:50 - 1:200), IHC, IHC-P (1:200), WB (1:500 - 1:1000)
Comment:	Target Species of Antibody: Human
Restrictions:	For Research Use only

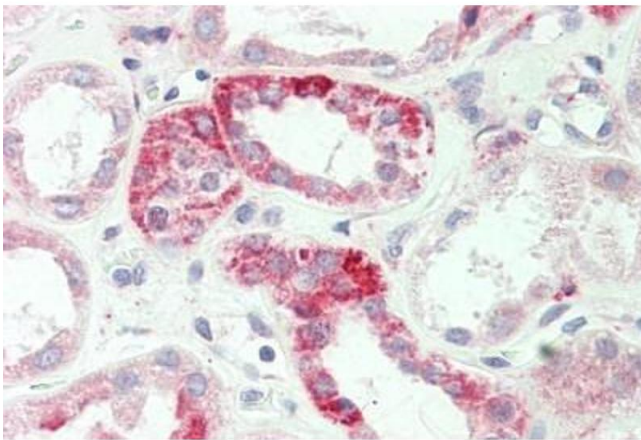
Handling

Format:	Liquid
Concentration:	Lot specific
Buffer:	PBS, pH 7.2, 0.05 % sodium azide
Preservative:	Sodium azide
Precaution of Use:	This product contains Sodium azide: a POISONOUS AND HAZARDOUS SUBSTANCE which should be handled by trained staff only.
Handling Advice:	Avoid freeze-thaw cycles.
Storage:	4 °C, -20 °C
Storage Comment:	Store at 4°C short term. Aliquot and store at -20°C long term. Avoid freeze-thaw cycles.



Immunohistochemistry

Image 1. Human Small Intestine: Formalin-Fixed, Paraffin-Embedded (FFPE)



Immunohistochemistry

Image 2. Human Kidney: Formalin-Fixed, Paraffin-Embedded (FFPE)