



[Go to Product page](#)

Datasheet for ABIN2888469

anti-MEK1 + MEK2 antibody (pSer221)

2 Images

Overview

Quantity:	100 µL
Target:	MEK1 + MEK2
Binding Specificity:	pSer221
Reactivity:	Human, Mouse, Rat
Host:	Rabbit
Clonality:	Polyclonal
Conjugate:	This MEK1 + MEK2 antibody is un-conjugated
Application:	Western Blotting (WB), Immunohistochemistry (IHC), Immunohistochemistry (Paraffin-embedded Sections) (IHC (p)), ELISA

Product Details

Immunogen:	Synthetic peptide from human MEK1/2 around the phosphorylation site of Ser221. Type of Immunogen: Synthetic peptide
Isotype:	IgG
Specificity:	MEK1/2 (Phospho-Ser221) Antibody detects endogenous levels of MEK1/2 only when phosphorylated at serine221.
Purification:	Immunoaffinity purified

Target Details

Target:	MEK1 + MEK2
---------	-------------

Target Details

Alternative Name: MEK1 + MEK2 ([MEK1 + MEK2 Products](#))

Background: This antibody detects: MEK1 + MEK2

Application Details

Application Notes: Approved: IHC, IHC-P (1:50 - 1:100), Peptide-ELISA (1:20000), WB (1:500 - 1:1000)

Comment: Target Species of Antibody: Human

Restrictions: For Research Use only

Handling

Format: Liquid

Concentration: Lot specific

Buffer: PBS (without Mg²⁺, Ca²⁺), pH 7.4, 150 mM sodium chloride, 0.02 % sodium azide, 50 % glycerol

Preservative: Sodium azide

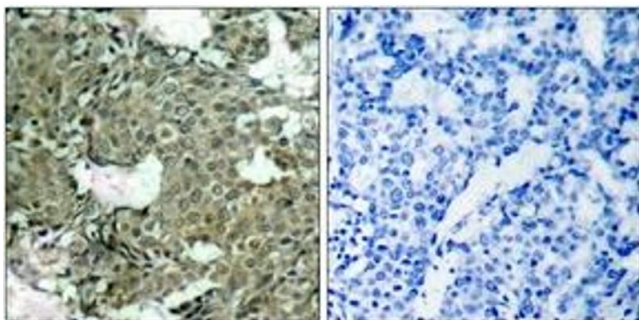
Precaution of Use: This product contains Sodium azide: a POISONOUS AND HAZARDOUS SUBSTANCE which should be handled by trained staff only.

Storage: -20 °C

Storage Comment: Store at -20°C for up to 1 year.

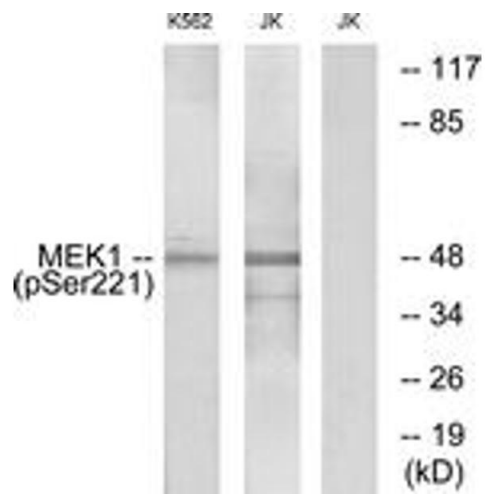
Expiry Date: 12 months

Images



Immunohistochemistry

Image 1.



Western Blotting

Image 2.