



[Go to Product page](#)

Datasheet for ABIN2888665

anti-Insulin Receptor antibody (AA 1326-1375)

2 Images

Overview

Quantity:	100 µL
Target:	Insulin Receptor (INSR)
Binding Specificity:	AA 1326-1375
Reactivity:	Human
Host:	Rabbit
Clonality:	Polyclonal
Conjugate:	This Insulin Receptor antibody is un-conjugated
Application:	ELISA, Immunohistochemistry (IHC), Immunofluorescence (IF)

Product Details

Immunogen:	Synthetic peptide from human IR (aa1326-1375). Type of Immunogen: Synthetic peptide
Isotype:	IgG
Specificity:	IR (Ab-1355) Antibody detects endogenous levels of total IR protein.
Purification:	Immunoaffinity purified

Target Details

Target:	Insulin Receptor (INSR)
Alternative Name:	INSR / Insulin Receptor (INSR Products)

Target Details

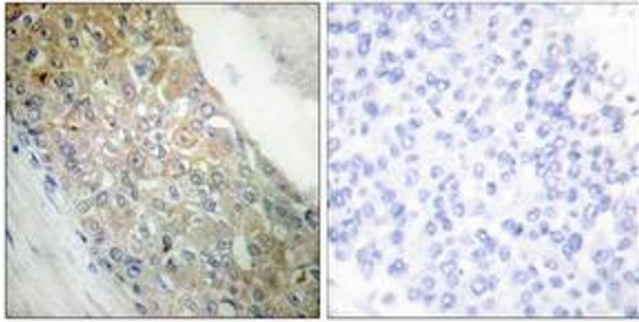
Background:	Name/Gene ID: INSR Subfamily: Insulin receptor Family: Protein Kinase Synonyms: INSR, CD220, ILP receptor, Insulin receptor, IR, HHF5, CD220 antigen
Gene ID:	3643
UniProt:	P06213
Pathways:	NF-kappaB Signaling , RTK Signaling , AMPK Signaling , Carbohydrate Homeostasis , Regulation of Cell Size , Regulation of Carbohydrate Metabolic Process , Growth Factor Binding , Negative Regulation of Transporter Activity

Application Details

Application Notes:	Approved: IF (1:100 - 1:500), IHC (1:50 - 1:100), Peptide-ELISA (1:1000) Not recommended for: IHC-P
Comment:	Target Species of Antibody: Human
Restrictions:	For Research Use only

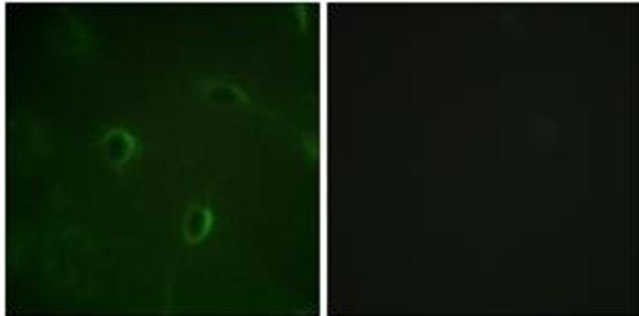
Handling

Format:	Liquid
Concentration:	Lot specific
Buffer:	PBS (without Mg ²⁺ , Ca ²⁺), pH 7.4, 150 mM sodium chloride, 0.02 % sodium azide, 50 % glycerol
Preservative:	Sodium azide
Precaution of Use:	This product contains Sodium azide: a POISONOUS AND HAZARDOUS SUBSTANCE which should be handled by trained staff only.
Storage:	-20 °C
Storage Comment:	Store at -20°C for up to 1 year.
Expiry Date:	12 months



Immunohistochemistry

Image 1.



Immunofluorescence

Image 2.