



[Go to Product page](#)

Datasheet for ABIN2888943
anti-AKT1/2 antibody (AA 276-325)

2 Images

Overview

Quantity:	100 µL
Target:	AKT1/2
Binding Specificity:	AA 276-325
Reactivity:	Human, Mouse, Rat
Host:	Rabbit
Clonality:	Polyclonal
Conjugate:	This AKT1/2 antibody is un-conjugated
Application:	Western Blotting (WB), Immunohistochemistry (IHC), ELISA

Product Details

Immunogen:	Synthetic peptide from human Akt (aa276-325). Type of Immunogen: Synthetic peptide
Isotype:	IgG
Specificity:	Akt (Ab-308) Antibody detects endogenous levels of total Akt protein.
Purification:	Immunoaffinity purified

Target Details

Target:	AKT1/2
Alternative Name:	AKT1 + AKT2 (AKT1/2 Products)

Target Details

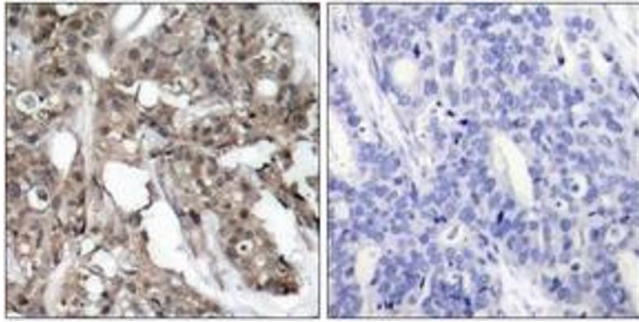
Background:	Name/Gene ID: AKT1/AKT2
	Synonyms: AKT1/AKT2
	This antibody detects: AKT1 + AKT2

Application Details

Application Notes:	Approved: IHC (1:50 - 1:100), Peptide-ELISA (1:5000), WB (1:500 - 1:1000)
	Not recommended for: IHC-P
Comment:	Target Species of Antibody: Human
Restrictions:	For Research Use only

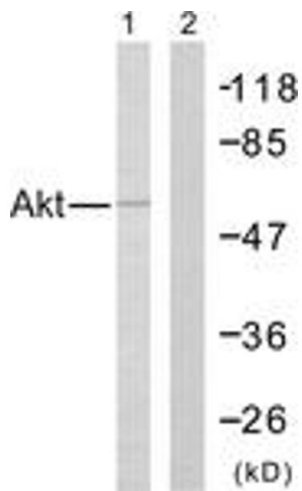
Handling

Format:	Liquid
Concentration:	Lot specific
Buffer:	PBS (without Mg ²⁺ , Ca ²⁺), pH 7.4, 150 mM sodium chloride, 0.02 % sodium azide, 50 % glycerol
Preservative:	Sodium azide
Precaution of Use:	This product contains Sodium azide: a POISONOUS AND HAZARDOUS SUBSTANCE which should be handled by trained staff only.
Storage:	-20 °C
Storage Comment:	Store at -20°C for up to 1 year.
Expiry Date:	12 months



Immunohistochemistry

Image 1.



Western Blotting

Image 2.