



[Go to Product page](#)

Datasheet for ABIN2889103

## anti-Ephrin B antibody (AA 566-615)

### 1 Image

#### Overview

Quantity:	100 µL
Target:	Ephrin B (EphB)
Binding Specificity:	AA 566-615
Reactivity:	Human, Mouse
Host:	Rabbit
Clonality:	Polyclonal
Conjugate:	This Ephrin B antibody is un-conjugated
Application:	Western Blotting (WB), ELISA

#### Product Details

Immunogen:	Synthetic peptide from human EPHB1/2/3/4 (aa566-615). Type of Immunogen: Synthetic peptide
Isotype:	IgG
Specificity:	EPHB1/2/3/4 Antibody detects endogenous levels of total EPHB1/2/3/4 protein.
Purification:	Immunoaffinity purified

#### Target Details

Target:	Ephrin B (EphB)
Abstract:	<a href="#">EphB Products</a>

## Target Details

---

Background: Name/Gene ID: EphB

Synonyms: EphB

## Application Details

---

Application Notes: Approved: Peptide-ELISA (1:10000), WB (1:500 - 1:1000)

Comment: Target Species of Antibody: Human

Restrictions: For Research Use only

## Handling

---

Format: Liquid

Concentration: Lot specific

Buffer: PBS (without Mg<sup>2+</sup>, Ca<sup>2+</sup>), pH 7.4, 150 mM sodium chloride, 0.02 % sodium azide, 50 % glycerol

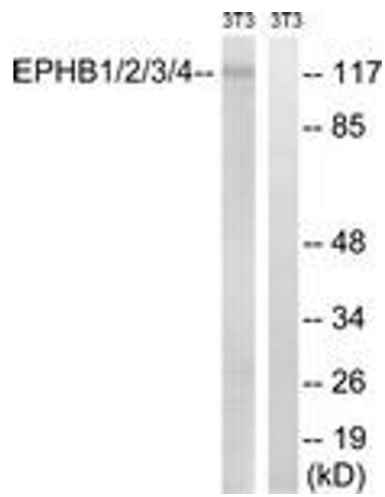
Preservative: Sodium azide

Precaution of Use: This product contains Sodium azide: a POISONOUS AND HAZARDOUS SUBSTANCE which should be handled by trained staff only.

Storage: -20 °C

Storage Comment: Store at -20°C for up to 1 year.

Expiry Date: 12 months



### Western Blotting

Image 1.