



[Go to Product page](#)

Datasheet for ABIN2889292
anti-XRCC1 antibody (AA 517-566)

2 Images

Overview

Quantity:	100 µL
Target:	XRCC1
Binding Specificity:	AA 517-566
Reactivity:	Human, Mouse, Rat
Host:	Rabbit
Clonality:	Polyclonal
Conjugate:	This XRCC1 antibody is un-conjugated
Application:	Western Blotting (WB), Immunohistochemistry (IHC), ELISA, Immunohistochemistry (Paraffin-embedded Sections) (IHC (p))

Product Details

Immunogen:	Synthetic peptide from human XRCC1 (aa517-566). Type of Immunogen: Synthetic peptide
Isotype:	IgG
Specificity:	XRCC1 Antibody detects endogenous levels of total XRCC1 protein.
Purification:	Immunoaffinity purified

Target Details

Target:	XRCC1
Alternative Name:	XRCC1 (XRCC1 Products)

Target Details

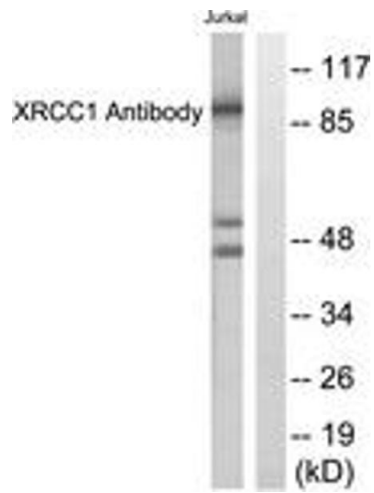
Background:	Name/Gene ID: XRCC1
	Synonyms: XRCC1, RCC, DNA repair protein XRCC1
Gene ID:	7515
UniProt:	P18887
Pathways:	DNA Damage Repair

Application Details

Application Notes:	Approved: IHC, IHC-P, Peptide-ELISA (1:10000), WB (1:500 - 1:1000)
Comment:	Target Species of Antibody: Human
Restrictions:	For Research Use only

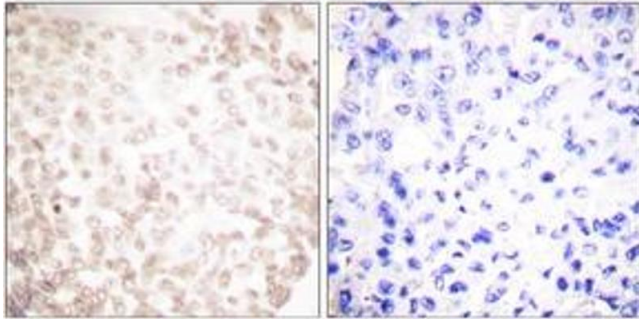
Handling

Format:	Liquid
Concentration:	Lot specific
Buffer:	PBS (without Mg ²⁺ , Ca ²⁺), pH 7.4, 150 mM sodium chloride, 0.02 % sodium azide, 50 % glycerol
Preservative:	Sodium azide
Precaution of Use:	This product contains Sodium azide: a POISONOUS AND HAZARDOUS SUBSTANCE which should be handled by trained staff only.
Storage:	-20 °C
Storage Comment:	Store at -20°C for up to 1 year.
Expiry Date:	12 months



Western Blotting

Image 1.



Immunohistochemistry

Image 2.