



[Go to Product page](#)

Datasheet for ABIN2889293  
**anti-XRCC2 antibody (AA 211-260)**

1 Image

Overview

Quantity:	100 µL
Target:	XRCC2
Binding Specificity:	AA 211-260
Reactivity:	Human
Host:	Rabbit
Clonality:	Polyclonal
Conjugate:	This XRCC2 antibody is un-conjugated
Application:	Immunohistochemistry (IHC), ELISA, Immunohistochemistry (Paraffin-embedded Sections) (IHC (p))

Product Details

Immunogen:	Synthetic peptide from human XRCC2 (aa211-260). Type of Immunogen: Synthetic peptide
Isotype:	IgG
Specificity:	XRCC2 Antibody detects endogenous levels of total XRCC2 protein.
Purification:	Immunoaffinity purified

Target Details

Target:	XRCC2
Alternative Name:	XRCC2 ( <a href="#">XRCC2 Products</a> )

## Target Details

---

Background:	Name/Gene ID: XRCC2
	Synonyms: XRCC2, DNA repair protein XRCC2
Gene ID:	7516
UniProt:	<a href="#">O43543</a>
Pathways:	<a href="#">DNA Damage Repair</a>

## Application Details

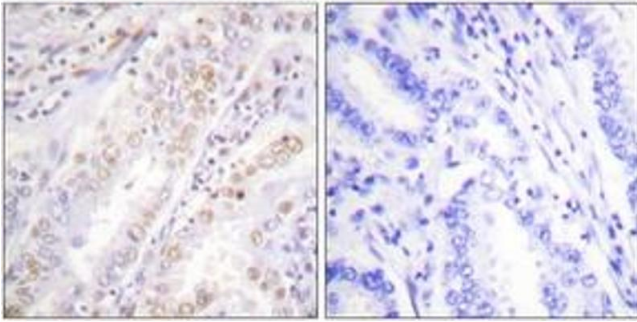
---

Application Notes:	Approved: IHC, IHC-P, Peptide-ELISA (1:10000)
Comment:	Target Species of Antibody: Human
Restrictions:	For Research Use only

## Handling

---

Format:	Liquid
Concentration:	Lot specific
Buffer:	PBS (without Mg <sup>2+</sup> , Ca <sup>2+</sup> ), pH 7.4, 150 mM sodium chloride, 0.02 % sodium azide, 50 % glycerol
Preservative:	Sodium azide
Precaution of Use:	This product contains Sodium azide: a POISONOUS AND HAZARDOUS SUBSTANCE which should be handled by trained staff only.
Storage:	-20 °C
Storage Comment:	Store at -20°C for up to 1 year.
Expiry Date:	12 months



## Immunohistochemistry

**Image 1.**