



Datasheet for ABIN2889566
anti-CHAF1B antibody (AA 71-120)



[Go to Product page](#)

1 Image

Overview

Quantity:	100 µL
Target:	CHAF1B
Binding Specificity:	AA 71-120
Reactivity:	Human, Mouse, Rat
Host:	Rabbit
Clonality:	Polyclonal
Conjugate:	This CHAF1B antibody is un-conjugated
Application:	Western Blotting (WB), ELISA

Product Details

Immunogen:	Synthetic peptide from human CAF1B (aa71-120). Type of Immunogen: Synthetic peptide
Isotype:	IgG
Specificity:	CAF1B Antibody detects endogenous levels of total CAF1B protein.
Purification:	Immunoaffinity purified

Target Details

Target:	CHAF1B
Alternative Name:	CHAF1B / CAF-1 (CHAF1B Products)

Target Details

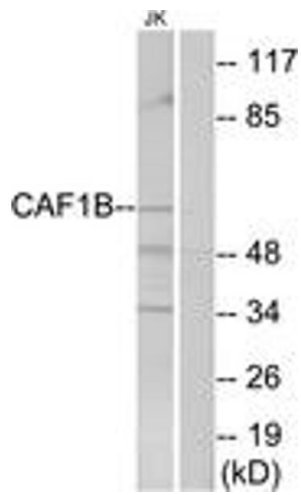
Background:	Name/Gene ID: CHAF1B Synonyms: CHAF1B, CAF-1 subunit B, CAF-I 60 kDa subunit, CAF-I p60, CAF1A, CAF-1, CAF-IP60, CAF1, CAF1P60, M-phase phosphoprotein 7, MPHOSPH7
Gene ID:	8208
UniProt:	Q13112

Application Details

Application Notes:	Approved: Peptide-ELISA (1:20000), WB (1:500 - 1:1000)
Comment:	Target Species of Antibody: Human
Restrictions:	For Research Use only

Handling

Format:	Liquid
Concentration:	Lot specific
Buffer:	PBS (without Mg ²⁺ , Ca ²⁺), pH 7.4, 150 mM sodium chloride, 0.02 % sodium azide, 50 % glycerol
Preservative:	Sodium azide
Precaution of Use:	This product contains Sodium azide: a POISONOUS AND HAZARDOUS SUBSTANCE which should be handled by trained staff only.
Storage:	-20 °C
Storage Comment:	Store at -20°C for up to 1 year.
Expiry Date:	12 months



Western Blotting

Image 1.