



[Go to Product page](#)

Datasheet for ABIN2889578  
**anti-MECOM antibody (AA 1-50)**

1 Image

Overview

Quantity:	100 µL
Target:	MECOM
Binding Specificity:	AA 1-50
Reactivity:	Human
Host:	Rabbit
Clonality:	Polyclonal
Conjugate:	This MECOM antibody is un-conjugated
Application:	Western Blotting (WB), ELISA

Product Details

Immunogen:	Synthetic peptide from human MECOM (aa1-50). Type of Immunogen: Synthetic peptide
Isotype:	IgG
Specificity:	Myelodysplasia Syndrome 1 Antibody detects endogenous levels of total Myelodysplasia Syndrome 1 protein.
Purification:	Immunoaffinity purified

Target Details

Target:	MECOM
Alternative Name:	MECOM / EVI1 ( <a href="#">MECOM Products</a> )

## Target Details

---

Background: Name/Gene ID: MECOM

Synonyms: MECOM, AML1-EVI-1, EVI-1, EVI1, MDS1, MDS1 and EVI1 complex locus, MDS1-EVI1, Oncogene EVI1, AML1-EVI-1 fusion protein, Zinc finger protein Evi1, Myelodysplasia syndrome 1, PRDM3

Gene ID: 2122

UniProt: [Q03112](#)

## Application Details

---

Application Notes: Approved: Peptide-ELISA (1:1000), WB (1:500 - 1:1000)

Comment: Target Species of Antibody: Human

Restrictions: For Research Use only

## Handling

---

Format: Liquid

Concentration: Lot specific

Buffer: PBS (without Mg<sup>2+</sup>, Ca<sup>2+</sup>), pH 7.4, 150 mM sodium chloride, 0.02 % sodium azide, 50 % glycerol

Preservative: Sodium azide

Precaution of Use: This product contains Sodium azide: a POISONOUS AND HAZARDOUS SUBSTANCE which should be handled by trained staff only.

Storage: -20 °C

Storage Comment: Store at -20°C for up to 1 year.

Expiry Date: 12 months

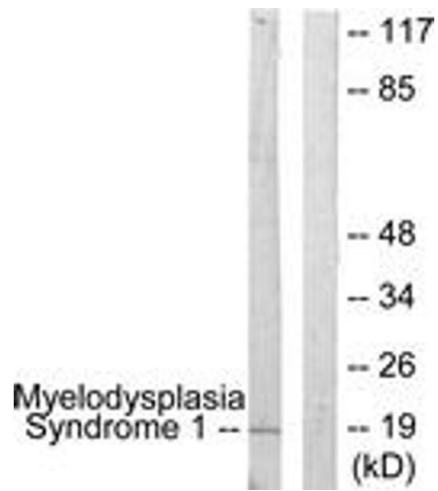


Image 1.