

Datasheet for ABIN2889783
anti-MARK1/2/3/4 antibody (AA 121-170)



[Go to Product page](#)

1 Image

Overview

Quantity:	100 µL
Target:	MARK1/2/3/4
Binding Specificity:	AA 121-170
Reactivity:	Human, Mouse, Rat
Host:	Rabbit
Clonality:	Polyclonal
Conjugate:	This MARK1/2/3/4 antibody is un-conjugated
Application:	ELISA, Western Blotting (WB)

Product Details

Immunogen:	Synthetic peptide from human MARK (aa121-170). Type of Immunogen: Synthetic peptide
Isotype:	IgG
Specificity:	MARK Antibody detects endogenous levels of total MARK protein.
Purification:	Immunoaffinity purified

Target Details

Target:	MARK1/2/3/4
Alternative Name:	MARK1/2/3/4 (MARK1/2/3/4 Products)

Target Details

Background: Name/Gene ID: MARK1/MARK2/MARK3/MA

Synonyms: MARK1/MARK2/MARK3/MA

This antibody detects: MARK1+2+3+4

Application Details

Application Notes: Approved: Peptide-ELISA (1:20000), WB (1:500 - 1:1000)

Comment: Target Species of Antibody: Human

Restrictions: For Research Use only

Handling

Format: Liquid

Concentration: Lot specific

Buffer: PBS (without Mg²⁺, Ca²⁺), pH 7.4, 150 mM sodium chloride, 0.02 % sodium azide, 50 % glycerol

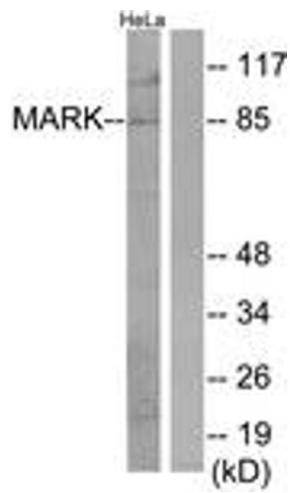
Preservative: Sodium azide

Precaution of Use: This product contains Sodium azide: a POISONOUS AND HAZARDOUS SUBSTANCE which should be handled by trained staff only.

Storage: -20 °C

Storage Comment: Store at -20°C for up to 1 year.

Expiry Date: 12 months



Western Blotting

Image 1.