



[Go to Product page](#)

Datasheet for ABIN2890071
anti-RPL10 antibody (AA 151-200)

1 Image

Overview

Quantity:	100 µL
Target:	RPL10
Binding Specificity:	AA 151-200
Reactivity:	Human
Host:	Rabbit
Clonality:	Polyclonal
Conjugate:	This RPL10 antibody is un-conjugated
Application:	Western Blotting (WB), ELISA

Product Details

Immunogen:	Synthetic peptide from human RPL10L (aa151-200). Type of Immunogen: Synthetic peptide
Isotype:	IgG
Specificity:	RPL10L Antibody detects endogenous levels of total RPL10L protein.
Purification:	Immunoaffinity purified

Target Details

Target:	RPL10
Alternative Name:	RPL10 / L10 (RPL10 Products)

Target Details

Background: Name/Gene ID: RPL10

Synonyms: RPL10, 60S ribosomal protein L10, AUTSX5, DXS648E, Protein QM, L10, Wilms tumor-related protein, Tumor suppressor QM, Ribosomal protein L10, DXS648, Laminin receptor homolog, QM

Gene ID: 6134

UniProt: [P27635](#)

Application Details

Application Notes: Approved: Peptide-ELISA (1:10000), WB (1:500 - 1:1000)

Comment: Target Species of Antibody: Human

Restrictions: For Research Use only

Handling

Format: Liquid

Concentration: Lot specific

Buffer: PBS (without Mg²⁺, Ca²⁺), pH 7.4, 150 mM sodium chloride, 0.02 % sodium azide, 50 % glycerol

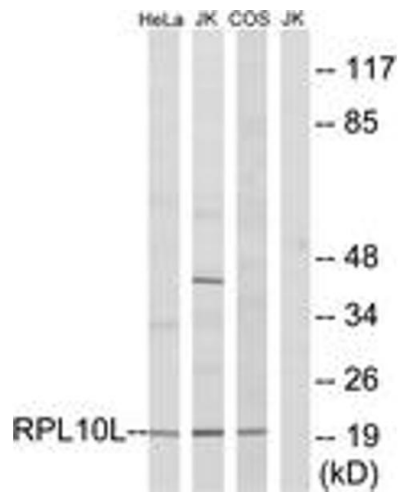
Preservative: Sodium azide

Precaution of Use: This product contains Sodium azide: a POISONOUS AND HAZARDOUS SUBSTANCE which should be handled by trained staff only.

Storage: -20 °C

Storage Comment: Store at -20°C for up to 1 year.

Expiry Date: 12 months



Western Blotting

Image 1.