



[Go to Product page](#)

Datasheet for ABIN2890209

anti-RRP8 antibody (AA 271-320)

1 Image

Overview

Quantity:	100 µL
Target:	RRP8
Binding Specificity:	AA 271-320
Reactivity:	Human
Host:	Rabbit
Clonality:	Polyclonal
Conjugate:	This RRP8 antibody is un-conjugated
Application:	Western Blotting (WB), ELISA

Product Details

Immunogen:	Synthetic peptide from human HUCE1 (aa271-320).
	Type of Immunogen: Synthetic peptide
Isotype:	IgG
Specificity:	HUCE1 Antibody detects endogenous levels of total HUCE1 protein.
Purification:	Immunoaffinity purified

Target Details

Target:	RRP8
Alternative Name:	RRP8 (RRP8 Products)

Target Details

Background: Name/Gene ID: RRP8

Synonyms: RRP8, Cerebral protein 1, KIAA0409, Nucleomethylin, RRP8 methyltransferase homolog, NML

Gene ID: 23378

UniProt: [O43159](#)

Application Details

Application Notes: Approved: Peptide-ELISA (1:20000), WB (1:500 - 1:1000)

Comment: Target Species of Antibody: Human

Restrictions: For Research Use only

Handling

Format: Liquid

Concentration: Lot specific

Buffer: PBS (without Mg²⁺, Ca²⁺), pH 7.4, 150 mM sodium chloride, 0.02 % sodium azide, 50 % glycerol

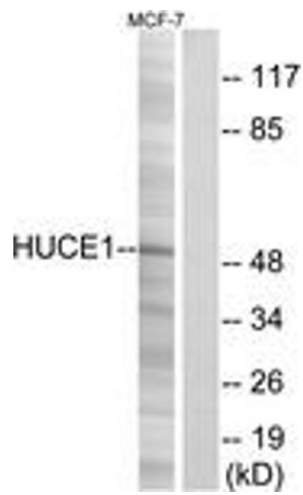
Preservative: Sodium azide

Precaution of Use: This product contains Sodium azide: a POISONOUS AND HAZARDOUS SUBSTANCE which should be handled by trained staff only.

Storage: -20 °C

Storage Comment: Store at -20°C for up to 1 year.

Expiry Date: 12 months



Western Blotting

Image 1.